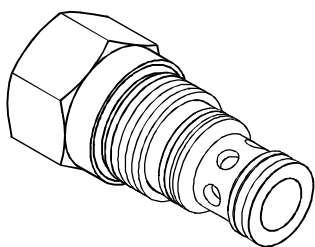


◆ **MODEL 型式**
VEV-10



◆ **DESCRIPTION 說明**

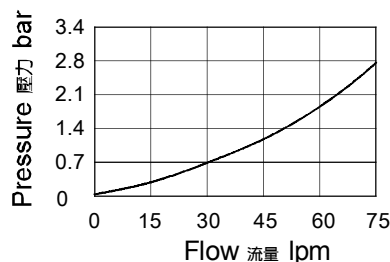
Hydraulic directional element, with multifunction potential when used with other directional, pressure, or flow control devices.

VEV series is a spring-biased blocking valve which will shift to allow full flow from ① to ② only when ③ is vented to create a pressure drop across the internal orifice which exceeds the pressure value of the selected bias spring force.

滑閥型邏輯方向閥，可與其它的方向，壓力，流量控制元件組成多功能閥。

VEV系列為彈簧截止閥，只有在③處進行泄油，且通過內節流孔產生的壓降超過所選定彈簧的預壓力時，閥蕊才會移動，使油液從①流向②。

◆ **PERFORMANCE(Cartridge Only) 特性曲線**



◆ **SPECIFICATIONS 規格**

Model Number 型式號碼	Maximum Pressure 最大壓力 bar	Maximum Flow 最大流量 lpm	Weight 重量 Kg
VEV-10	350 (5076psi)	60 (15.85 gpm)	0.2 (0.55 lbs)
Fluid Type 流體型式		ISO VG 32, 46, 68	
Viscosity 黏性 cSt		10~400 (59~1854 SSU)	
Operating Temperature 操作溫度 °C		-30~100 (-22~212°F)	
Contamination Level 污染標準		ISO4406. 20/18/15 NAS1638. 9	

◆ **HOW TO ORDER 編號說明**

1	2	3
VEV	10	*

1 VALVE SERIES 系列名稱
VEV= Cartridge Throttle Valves
插入式節流閥

2 SUBPLATE MOUNTING SIZE 稱呼口徑
Size :10
Cavity 孔口:CS10-3S
See Appendices-A 見附錄A
For Manifold See Appendices-B 油路板見附錄B

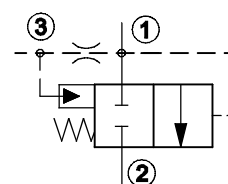
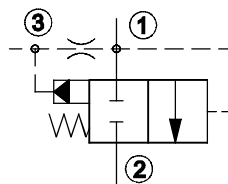
3 SPRING PRESSURE 彈簧壓力

Code 編碼	Spring pressure 彈簧壓力
20	2 (bar)
50	5 (bar)
80	8 (bar)

◆ **CONTROL PORT(S) 動作形式**

ISO :

USASI :



◆ **DIMENSIONS 外型尺寸圖**

