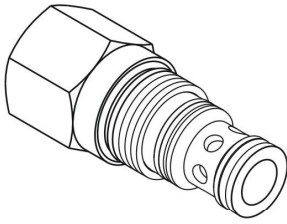


◆ **MODEL 型 式**
VEV-16



◆ **DESCRIPTION 說明**

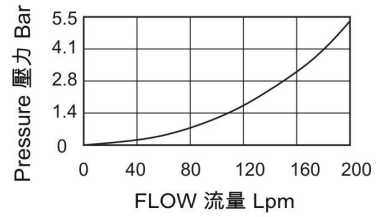
Hydraulic directional element, with multifunction potential when used with other directional, pressure, or flow control devices.

VEV series is a spring-biased blocking valve which will shift to allow full flow from ① to ② only when ③ is vented to create a pressure drop across the internal orifice which exceeds the pressure value of the selected bias spring force.

滑閥型邏輯方向閥，可與其它的方向，壓力，流量控制元件組成多功能閥。

VEV系列為彈簧截止閥，只有在③處進行泄油，且通過內節流孔產生的壓降超過所選定彈簧的預壓力時，閥芯才會移動，使油液從①流向②。

◆ **PERFORMANCE(Cartridge Only) 特性曲線**



◆ **SPECIFICATIONS 規 格**

Model Number 型式號碼	Maximum Pressure 最大壓力 bar	Maximum Flow 最大流量 lpm	Weight 重量 Kg
VEV-16	350 (5076psi)	200 (52.83 gpm)	0.6 (1.32 lbs)
Fluid Type 流體型式		ISO VG 32, 46, 68	
Viscosity 黏性 cSt		10~400 (59~1854 SSU)	
Operating Temperature 操作溫度 °C		-15~70 (-5~158°F)	
Contamination Level 污染標準		ISO4406. 21/19/16 NAS1638,10	

◆ **HOW TO ORDER 編號說明**

1	2	3
VEV	16	*

1 VALVE SERIES 系列名稱

VEV=CARTRIDGE THROTTLE VALVES
插入式節流閥

2 SUBPLATE MOUNTING SIZE 稱呼口徑

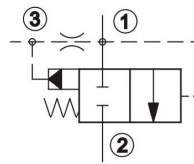
Size :16
Cavity 孔口:CS16-3S
See Page Appendixes-A_003
見附錄A_003頁面

3 ADJUSTMENT PRESSURE 壓力調整範圍

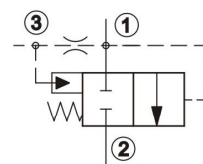
Order 編號	Cracking pressure 彈簧壓力
40	4 (bar)
80	8 (bar)
120	12 (bar)

◆ **CONTROL PORT(S) 動作形式**

ISO :



USASI :



◆ **DIMENSIONS 外型尺寸圖**

