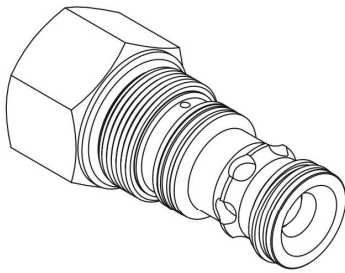


◆ **MODEL 型式**
VEV-20



◆ **DESCRIPTION 說明**

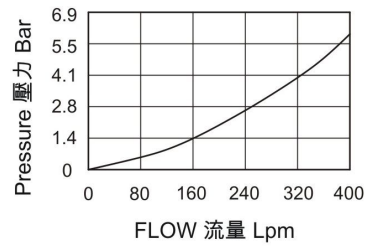
Hydraulic directional element, with multifunction potential when used with other directional, pressure, or flow control devices.

VEV series is a spring-biased blocking valve which will shift to allow full flow from ① to ② only when ③ is vented to create a pressure drop across the internal orifice which exceeds the pressure value of the selected bias spring force.

滑閥型邏輯方向閥，可與其它的方向，壓力，流量控制元件組成多功能閥。

VEV系列為彈簧截止閥，只有在③處進行泄油，且通過內節流孔產生的壓降超過所選定彈簧的預壓力時，閥芯才會移動，使油液從①流向②。

◆ **PERFORMANCE(Cartridge Only) 特性曲線**



◆ **SPECIFICATIONS 規格**

| Model Number 型式號碼 | Maximum Pressure 最大壓力 bar | Maximum Flow 最大流量 lpm | Weight 重量 Kg |
|--------------------------------------|------------------------------|------------------------------|-----------------|
| VEV-20 | 350 (5076psi) | 380 (100.39 gpm) | 0.82 (1.81 lbs) |
| Fluid Type 流體型式 | | ISO VG 32, 46, 68 | |
| Viscosity 黏性 cSt | | 10~400 (59~1854 SSU) | |
| Operating Temperature 操作溫度 °C | | -15~70 (-5~158 °F) | |
| Contamination Level 污染標準 | | ISO4406. 21/19/16 NAS1638,10 | |

◆ **HOW TO ORDER 編號說明**

| | | |
|----------|----------|----------|
| 1 | 2 | 3 |
| VEV | 20 | * |

1 VALVE SERIES 系列名稱
VEV=CARTRIDGE THROTTLE VALVES
插入式節流閥

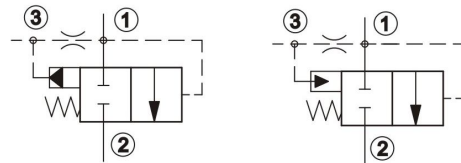
2 SUBPLATE MOUNTING SIZE 稱呼口徑
Size :20
Cavity 孔口:CS20-3S
See Page Appendixes-A_003
見附錄A_003頁面

3 ADJUSTMENT PRESSURE 壓力調整範圍

| Order 編號 | Cracking pressure 彈簧壓力 |
|-------------|---------------------------|
| 15 | 1.5 (bar) |
| 50 | 5.5 (bar) |
| 110 | 12.5 (bar) |

Spring pressure tolerance ±15%
彈簧壓力公差值±15%

◆ **CONTROL PORT(S) 動作形式**



◆ **DIMENSIONS 外型尺寸圖**

