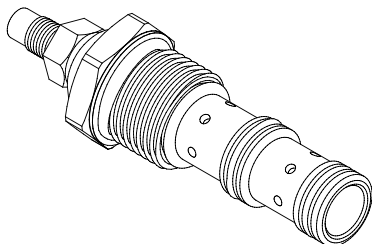
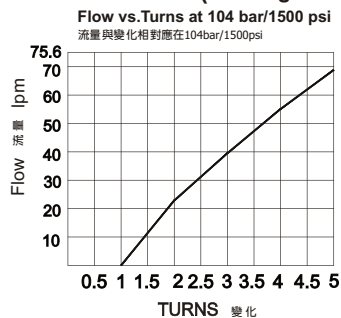


◆ **MODEL 型 式**

VF-12



◆ **PERFORMANCE(Cartridge Only) 特性曲線**



◆ **DESCRIPTION 說明**

A screw-in, cartridge-style, adjustable orifice, pressure-compensated, manually-operated, bypass-type hydraulic flow regulating valve. It can be used as a priority-type flow regulator or a restrictive-type 2-way flow regulator when the bypass port is blocked. The VF maintains a constant flow rate from ③ regardless of load pressure changes in the system downstream of ③, or in the bypass leg at ②. Reverse flow (③ to ①) bypasses the control orifice. The regulated flow increases from closed to fully open, with counter-clockwise rotation of the knob.

Note: When used as a bypass flow control in applications where the priority flow port will be blocked by external valving, bypass pressure drop will increase unless a small amount of leakage is provided for the priority port. Consult factory.

螺紋插裝式，節流孔可調壓力補償，手動操作旁通型流量調節閥，可以用作優先型流量調節閥或當封閉旁路油口②時可以用作二通節流型流量調節閥。VF型，從③流出的流量保持不變，不受③的下游回路或旁路②的負載壓力變化影響，反向液流(③流向①)不經過控制節流孔。逆時針轉動手柄，調節流量從閉合到完全打開時逐漸增加。  
註：當用作旁路流量控制且優先油口由其他的鎖封閉時，除非優先油口有小量洩漏，否則旁路壓降將增加。

◆ **SPECIFICATIONS 規格**

Model Number 型式號碼	Operating Pressure 操作壓力 bar	Maximum Flow 最大流量 lpm	Weight 重量 Kg
VF-12	240 (3481 psi)	114 (30.12 gpm)	0.4 (0.88 lbs)
<b>Fluid Type</b> 流體型式		ISO VG 32, 46, 68	
<b>Viscosity</b> 黏性 cSt		10~400 (59~1854 SSU)	
<b>Operating Temperature</b> 操作溫度 °C		-15~70 (-5~158 °F)	
<b>Contamination Level</b> 污染標準		ISO4406. 21/19/16 NAS1638,10	

- **Flow Rate (額定流量): 3-Ported regulated flow (油口 ③ 調節量 (優先+旁通)): 0~68 lpm (0~18 gpm)**
- **Input Flow (入口流量): 3-Ported (優先+旁通): 76 lpm (20 gpm) nominal (標稱); 114 lpm (30 gpm) max (最大)**

◆ **HOW TO ORDER 編號說明**

1	2	3
VF	12	— *

**1 VALVE SERIES 系列名稱**

VF= PRIORITY FLOW DIVIDER VALVE(Compensating type)  
優先分流閥(補償型)

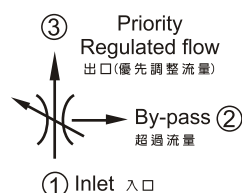
**2 SUBPLATE MOUNTING SIZE 稱呼口徑**

Size:12  
Cavity 孔口:CS12-3N  
See Page Appendixes-A\_002  
見附錄A\_002 頁面

**3 ADJUSTMENT OPTION 調整選擇**

NONE	NONE:TOOL ADJUST 無：工具調整式	
K	K:HAND-BAR ADJUST K：手把調整式	
C	C: NUT ADJUST C：螺帽調整式	

◆ **CONTROL PORT(S) 動作形式**



◆ **DIMENSIONS 外型尺寸圖**

