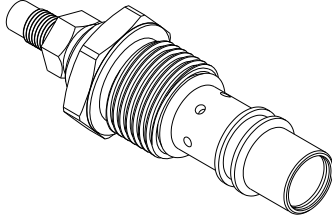


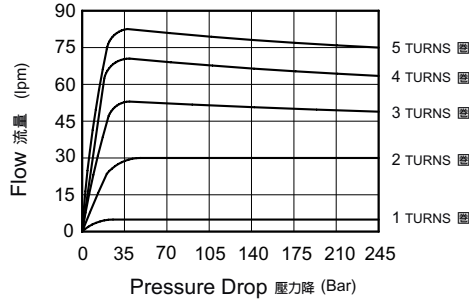
FLOW CONTROL VALVES 流量控制閥

VF SERIES CARTRIDGE THROTTLE VALVES (Pressure Compensated Included) VF系列插入式節流閥(附壓力補償)

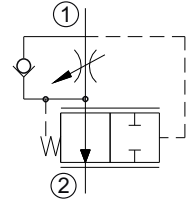
MODEL 型式 VF12-23



PERFORMANCE 特性曲線



CONTROL PORT(S) 動作形式



DESCRIPTION 說明

A screw-in, cartridge-style, adjustable orifice, pressure-compensated, manually-operated, hydraulic flow regulating valve (restrictive type). The VF maintains a constant flow rate out of ② regardless of load pressure changes in the circuit downstream of ② or upstream of ①. The regulated flow increases from closed to fully open with counter-clockwise rotation of the adjustment screw. The valve will maintain the set flow regardless of pressure variations on the regulated or inlet port. Reverse flow (② to ①) bypasses the control orifice.

本閥為螺紋插裝式，可調節流孔，壓力補償型手動流量調節閥（流量可調型）。

VF型，保持從②流出的流量恒定而不受②口下游回路或①口上游回路的負載壓力變化影響，逆時針旋轉調節器時，流量增大，節流孔從完全閉合到完全打開。該閥保持流量恒定，不受調節口或進油口的壓力變化影響，反向液流（從②流向①）繞過節流孔。

SPECIFICATIONS 規格

Model Number 型式號碼	Maximum Pressure 最大壓力 Bar	Operating Pressure 操作壓力 Bar	Control Flow 控制流量 lpm	Weight 重量 Kg
VF12-23	350 (5076 psi)	250 (3625 psi)	0.1~77 (0.03~20.34 gpm)	0.25 (0.55lbs)
Fluid Type 流體型式			ISO VG 32, 46, 68	
Viscosity 黏性 cSt			10~400 (59~1854 SSU)	
Operating Temperature 操作溫度 °C			-15~70 (-5~158 °F)	
Contamination Level 污染標準			ISO4406. 21/19/16 NAS1638,10	

HOW TO ORDER 編號說明

1	2	3	4
VF12	23	*	*

1 VALVE SERIES 系列名稱

VF = CARTRIDGE THROTTLE VALVES
(Pressure Compensated Included)
插入式節流閥(附壓力補償)

2 SUBPLATE MOUNTING SIZE 稱呼口徑

Size : 12 ※Standard Manifolds 標準油路板 : CS12-2NB
Cavity 孔口: CS12-2NB (Specific dimension please contact with us.)
(詳細尺寸請與我們聯絡.)

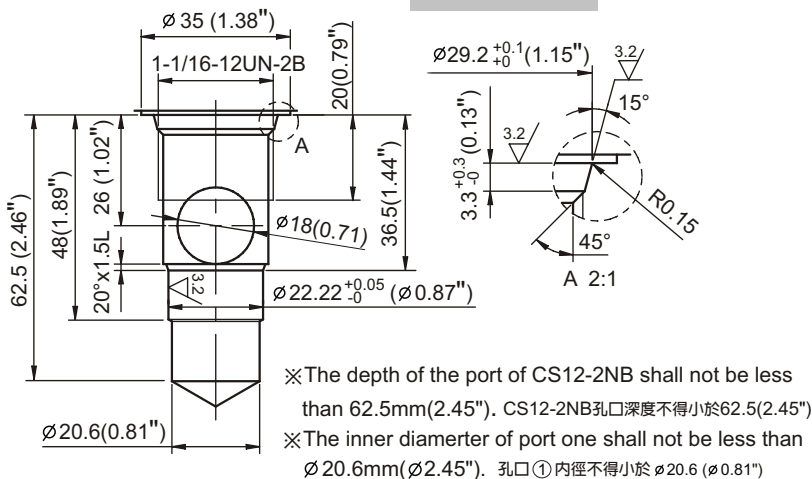
3 ADJUSTMENT OPTION 調整選擇

NONE	NONE: TOOL ADJUST 無：工具調整式	
K	K: HAND-BAR ADJUST K：手把調整式	

4 DESIGN NO 設計編號

DIMENSIONS 孔口尺寸圖

CS12-2NB



DIMENSIONS 外型尺寸圖

