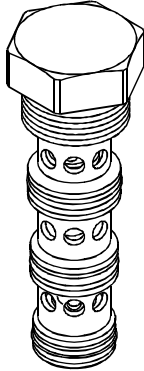


◆ **MODEL 型 式**
VFD-16

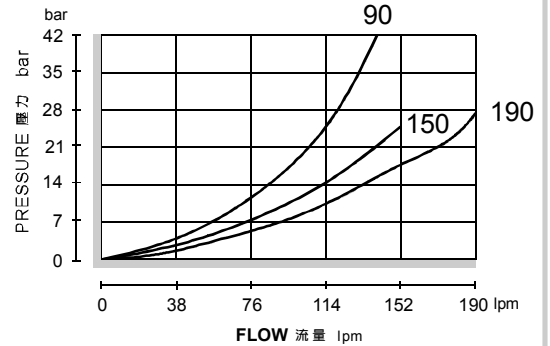


◆ **DESCRIPTION 說明**

Screw-in, cartridge-style, spool-type flow divider /combiner.
In the dividing mode, the item will divert input flow from 3 to 2 and 4, based on the ratio specified, regardless of operating pressure. When the flow direction is reversed the valve will combine flows from 2 and 4 to port 3. Synchronizing flow is provided in both the dividing and combining modes at "bottomed" conditions in cylinder applications and at stalled conditions in motor applications.
螺紋插入式滑閥型分流/集流閥。
當處於分流模式時，輸入流量從油口3按指定比例分流向油口2和4，不受工作壓力影響。當反向流動時，油口2和4的流量將匯集到油口3處。在"油缸到達最大行程"和"馬達空轉"情況下可提供分流、集流模式的同步運動。

◆ **PERFORMANCE 特性曲線**

Test Conditions 測試條件
Oil Temperature 油溫度: 50°C(122°F)
Viscosity 黏性: 35 cSt (163 SSU)



◆ **SPECIFICATIONS 規 格**

Model Number 型式號碼	Operating Pressure 操作壓力 bar	Flow 流量 lpm	Weight 重量 Kg
VFD-16	350 (5076 psi)	194 (51.25 gpm)	0.4 (0.88 lbs)
Fluid Type 流體型式		ISO VG 32, 46, 68	
Viscosity 黏性 cSt		10~400 (59~1854 SSU)	
Operating Temperature 操作溫度 °C		-30~100 (-22~212°F)	
Contamination Level 污染標準		ISO4406. 21/19/16 NAS1638,10	

◆ **HOW TO ORDER 編號說明**

1	2	3
VFD	16	— 90

1 VALVE SERIES 系列名稱
VFD = FLOW DIVIDER 分流閥

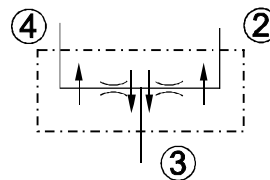
2 SUBPLATE MOUNTING SIZE 稱呼口徑

Size : 16
Cavity 孔口: CS16A-4N
See Page Appendixes-A_005
見附錄A_005 頁面

3 FLOW SPECIFICATIONS 流量規格

90: 90 l/min
110: 110 l/min
150: 150 l/min
190: 194 l/min
220: 220 l/min
Division ratio: 50%- 50%
分流比例
Flow Accuracy: 3% ~ 10%
分流精度

◆ **CONTROL PORT(S) 動作形式**



◆ **DIMENSIONS 外型尺寸圖**

