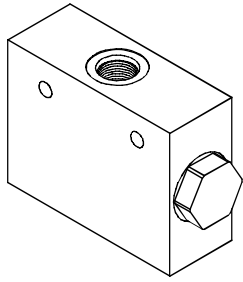


◆ MODEL 型式 VFDC-03



◆ DESCRIPTION 說明

A specialized flow divider/combiner valve manifold, commonly applied in hydraulic motor drive applications with uneven pressure loads caused by steering or ground conditions. If a pressure differential develops, fluid will be transferred to the lower pressure port from the higher pressure port via an internal body orifice. In the combining mode, the internal orifice will serve to equalize load pressures, preventing combiner spool lock-up.

特殊的分流/集流閥，常常用於液壓馬達驅動時因操作或地面條件引起的負載壓力不均衡的場所。

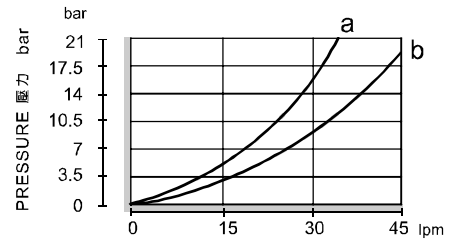
如果有壓力差產生，油液將經過閥內的節流孔從壓力較高的油口流向壓力較低的口。當處於集流模式時，閥內的節流孔將均衡負載壓力，以防止集流閥心封閉閥口。

◆ PERFORMANCE 特性曲線

Test Conditions 測試條件

Oil Temperature 油溫度: 50°C (122°F)

Viscosity 黏性: 35 cSt (163 SSU)



◆ SPECIFICATIONS 規格

| Model Number 型式號碼 | Operating Pressure 操作壓力 bar | Flow 流量 lpm | Weight 重量 Kg |
|-------------------------------|--------------------------------|------------------------------|-----------------|
| VFDC-03 | 250 (3626 psi) | 45 (11.89 gpm) | 0.6 (1.32 lbs) |
| Fluid Type 流體型號 | | ISO VG 32, 46, 68 | |
| Viscosity 黏性 cSt | | 10~400 (59~1854 SSU) | |
| Operating Temperature 操作溫度 °C | | -15~70 (-5~158 °F) | |
| Contamination Level 污染標準 | | ISO4406. 21/19/16 NAS1638,10 | |

◆ HOW TO ORDER 編號說明

| 1 | 2 | 3 | 4 |
|------|----|------|-----|
| VFDC | 03 | — 07 | — * |

1 VALVE SERIES 系列名稱

VFDC = FLOW DIVIDER Valves 分流閥

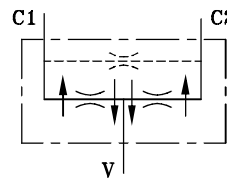
2 SUBPLATE MOUNTING SIZE 稱呼口徑

03: G 3/8

3 FLOW SPECIFICATIONS 流量規格

| | |
|--------------------|--|
| 07: 2.3~7.6 l/min | Division or combination ratio: 50%:50% |
| 15: 4.5~15 l/min | |
| 22: 6.8~22.7 l/min | |
| 30: 9~30 l/min | |
| 37: 11~37 l/min | |
| 45: 13.5~45 l/min | Flow Accuracy: 3% ~ 10% |
| | 分流精度 |

◆ CONTROL PORT(S) 動作形式



4 THREADED TYPE 螺紋規格

1P: PT 2N: NPT
3G: PF(G) 4A: SAE
5B: BSP

◆ DIMENSIONS 外型尺寸圖

外型尺寸圖

