

◆ **MODEL 型 式**

VIFC-380

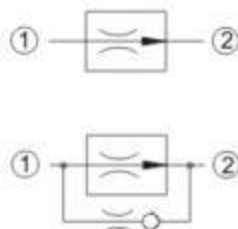


◆ **DESCRIPTION 說明**

A screw-in insert type, 2-way pressure compensated flow control valve. The flow rate of this valve in the 1 to 2 flow path is largely independent of the system pressure and is determined by the dimension of a calibrated orifice. The valve cannot be adjusted for variable flow output. Free flow in the 2 to 1 path is allowed and not pressure compensated.

插入式二路壓力補償流量控制閥。此產品的流量在 1 到 2 的流動路徑，在很大程度上是固定的，壓力是由阻尼孔決定。這個閥沒辦法調整做為可變流量輸出。從 2 到 1 路徑自由流量是可行的，但沒有壓力補償。

◆ **CONTROL PORT(S) 動作形式**



◆ **SPECIFICATIONS 規 格**

Model Number 型式號碼	Maximum Pressure 最大壓力 bar	Flow 流量 Lpm	Weight 重量 Kg
VIFC-380	210 (3046psi)	Non-adjustable 不可調整 (See below) 見下方	0.03 (0.07 lbs)
Fluid Type 液體型式		ISO VG 32 , 46 , 68	
Viscosity 黏性 cSt		10~400 (59~1854 SSU)	
Operating Temperature 操作溫度 °C		-15~70 (-5~158° F)	
Contamination Level 污染標準		ISO4406, 21/19/16 NAS1638,10	

◆ **HOW TO ORDER 編號說明**

1	2	3
VIFC	380	— 12

1 VALVE SERIES 系列名稱

VIFC = Buried Type Pressure Compensated Flow Control Valves
埋入式壓力補償流量控制閥

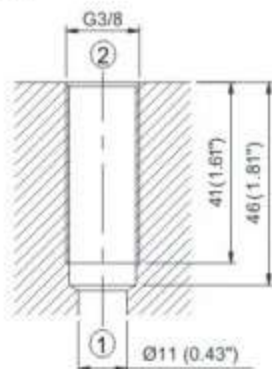
3 FLOW OPTION 流量選擇

At 100 bar (1450 psi) flow range (±10%)
在 100 bar (1450 psi) 時流量範圍 (±10%)

Order 編號	FLOW 流量 lpm
04	4
05	5
06	6
08	8
10	10
12	12
16	16

2 SUBPLATE MOUNTING SIZE 嵌穿口徑

Size: 380
Cavity 孔口:



◆ **DIMENSIONS 外型尺寸圖**

