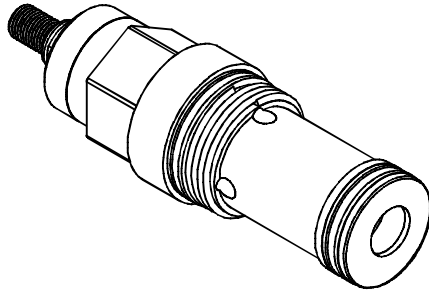


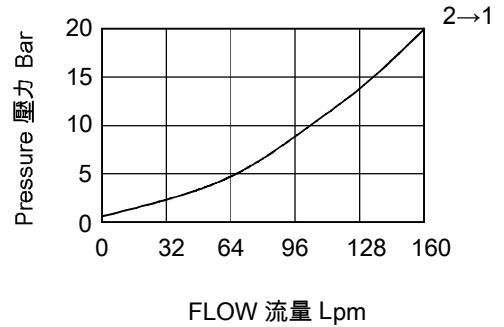
◆ **MODEL 型 式**

VNC-06



◆ **PERFORMANCE(Cartridge Only)**

特性曲線



◆ **SPECIFICATIONS 規 格**

Model Number 型式號碼	Maximum Pressure 最大壓力 bar	Maximum Flow 最大流量 Lpm	Weight 重量 Kg
VNC-06	350 (5076 psi)	120 (31.70 gpm)	0.6 (1.32 lbs)
Fluid Type 流體型式		ISO VG 32,46,68	
Viscosity 黏性 cSt		10~400 (59~1854SSU)	
Operating Temperature 操作溫度 °C		-30~100 (-22~212°F)	
Contamination Level 污染標準		ISO4406. 21/19/16 NAS1638,10	

◆ **HOW TO ORDER 編號說明**

1	2	3	4	5
VNC	06	A	20	*

1 VALVE SERIES 系列名稱

VNC=CARTRIDGE CHECK THROTTLE VALVES
插入式止逆節流閥

2 SUBPLATE MOUNTING SIZE 稱呼口徑

06 :T-16A
Cavity 孔口:CST-16A
See Page Appendixes-A_007
見附錄A_007頁面

3 CONTROL FLOW 控制流量

A : 120 Lpm (31.70 gpm)
B : 60 Lpm (15.85 gpm)

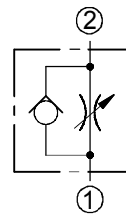
4 BIAS SPRING 開啓壓力

20 : 2 bar (29psi)
50 : 5 bar (73psi)

5 ADJUSTMENT OPTION 調整選擇

NONE	NONE:TOOL ADJUST 無：工具調整式	
K	K:HAND-BAR ADJUST K：手把調整式	
KT	KT:HAND-BAR ADJUST (Three-winged) KT：手把調整式(三翼)	

◆ **CONTROL PORT(S) 動作形式**



◆ **DIMENSIONS 外型尺寸圖**

