

# FLOW CONTROL VALVES

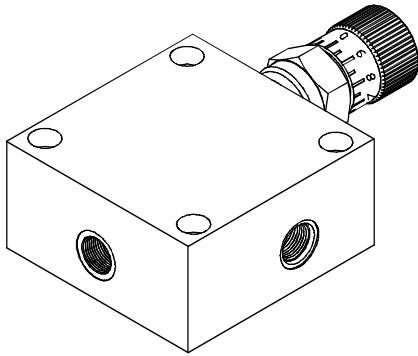
流量控制閥

## VOFH SERIES FLOW VALVES

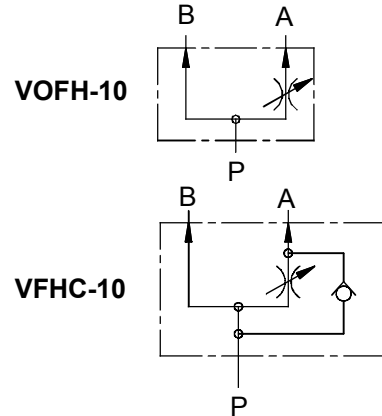
VOFH 系列流量閥

### ◆ MODEL 型 式

VOFH-10



### ◆ CONTROL PORT(S) 動作形式



### ◆ SPECIFICATIONS 規 格

Model Number 型式號碼	Operating Pressure 操作壓力 Bar	Control Flow 控制流量 lpm	Weight 重量 Kg
VOFH-10	350 (5076 psi)	0.1~30 (0.03~7.93 gpm)	1.1 (2.42lbs)
VFHC-10			
Fluid Type 流體型式		ISO VG 32, 46, 68	
Viscosity 黏性 cSt		10~400 (59~1854 SSU)	
Operating Temperature 操作溫度 °C		-15~70 (-5~158 °F)	
Contamination Level 污染標準		ISO4406. 21/19/16 NAS1638,10	

### ◆ HOW TO ORDER 編號說明

<b>1</b>	<b>2</b>	<b>3</b>
VOFH	10	1P

#### 1 VALVE SERIES 系列名稱

VOFH = FLOW VALVES 流量閥  
VFHC = FLOW VALVES (Included check valves)  
流量閥(附止逆閥)

#### 3 THREADED TYPE 螺紋規格

1P: PT 2N: NPT 3G: PF(G) 4A: SAE 5B: BSP

#### 2 SUBPLATE MOUNTING SIZE 稱呼口徑

Size : 10  
Cavity 孔口: CS10-2N  
See Page Appendixes-A\_001  
見附錄A\_001 頁面

### ◆ DIMENSIONS 外型尺寸圖

