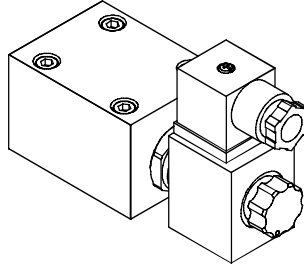


◆ **MODEL 型 式**
LVSE-02G



◆ **SPECIFICATIONS 規 格**

Model Number 型式號碼	Maximum Pressure 最大壓力 bar	Maximum Flow 最大流量 lpm	Weight 重量 Kg
LVSE-02G	350 (5076 psi)	40 (10.57 gpm)	1.4 (3.09 lbs)
LVSE-02G-50A, 50B	210 (3046 psi)	10 (2.64 gpm)	1.9 (4.19 lbs)
Fluid Type 流體型式	ISO VG 32, 46, 68		
Viscosity 黏性 cSt	10~400 (59~1854 SSU)		
Operating Temperature 操作溫度 °C	-30~100 (-22~212°F)		
Contamination Level 污染標準	ISO4406. 21/19/16 NAS1638,10		
Surface Treatment 表面處理	Zinc Phosphate Compound 鋅 磷酸鹽 化合物		

● All screws with metric measure, if require inch measure, please contact us.

所附螺絲皆為公制標準規格品，若需英制螺絲請另外備註說明。

◆ **HOW TO ORDER 編號說明**

1	2	3	4	5
LVSE	02	G	**	20

1 VALVE SERIES 系列名稱

LVSE= SOLENOID OPERATED CHECK VALVES
電磁止逆閥

2 SUBPLATE MOUNTING SIZE: 稱呼口徑

02 = 1/4"(6mm)
ISO CETOP3
DIN NG 6
NFPA D03

3 CONNECTING TYPE 連接型式

G:TYPE:BASEPLATE MOUNTING TYPE
G: (板式連接)

4 TYPE OF COIL 電磁閥電磁線圈類型

A1 : AC110 60HZ D1: DC12
A115 : AC115 50HZ D2: DC24
A230 : AC230 50HZ R1: RF110 60HZ/50HZ
A2 : AC220 60HZ R2: RF220 60HZ/50HZ

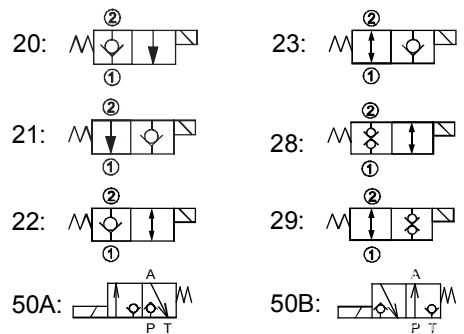
5 CONTROL WAY 控制方式

Please consider another control methods of Chia Wang's cartridge valves and spool.

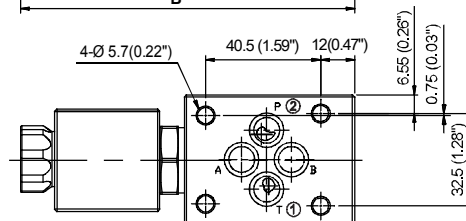
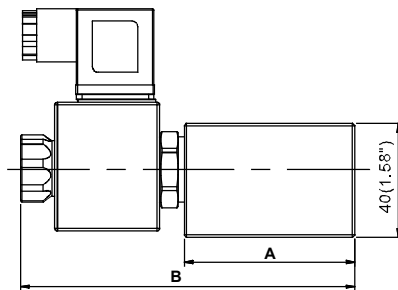
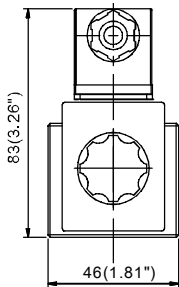
Http://www.chia-wang.com(VSV, VVE SERIES)

其它控制方式請參考佳王插式閥軸心資料。

Http://www.chia-wang.com(VSV, VVE 系列)



◆ **DIMENSIONS 外型尺寸圖**



Model 型式	Size 尺寸	A	B
LVSE-02G		60(2.36")	118(4.63")
LVSE-02G-50A, 50B		80(3.15")	161(6.34")

● **Mounting Interface 安裝板面**

ISO 4401-AB-03-4-A