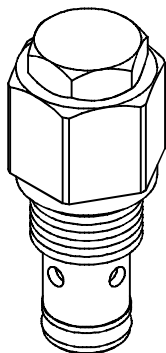
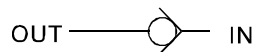


◆ **MODEL 型 式**

VCA-02



◆ **CONTROL PORT(S) 動作形式**



◆ **SPECIFICATIONS 規 格**

Model Number 型式號碼	Operating Pressure 操作壓力 bar	Cracking 壓力 kg/cm <sup>2</sup>	Flow 流量 lpm	Weight 重量 Kg
VCA-02	250 (3626psi)	0.3~3.0	30 (7.93 gpm)	0.2 (0.45 lbs)
VCA-03			80 (21.13 gpm)	0.3 (0.68 lbs)
VCA-06			160 (42.27 gpm)	0.5 (1.13 lbs)
VCA-10			220 (58.12 gpm)	0.6 (1.4 lbs)
VCA-12			400 (105.67 gpm)	1.67 (3.68 lbs)
<b>Fluid Type</b> 流體型式			ISO VG 32, 46, 68	
<b>Viscosity</b> 黏性 cSt			10~400 (59~1854 SSU)	
<b>Operating Temperature</b> 操作溫度 °C			-15~70 (-5~158 °F)	
<b>Contamination Level</b> 污染標準			ISO4406. 21/19/16 NAS1638,10	

◆ **HOW TO ORDER 編號說明**

<b>1</b>	<b>2</b>	<b>3</b>	<b>4</b>
VCA	03	A	10

**1 VALVE SERIES** 系列名稱  
VCA= CARTRIDGE CHECK VALVES  
插入式止逆閥

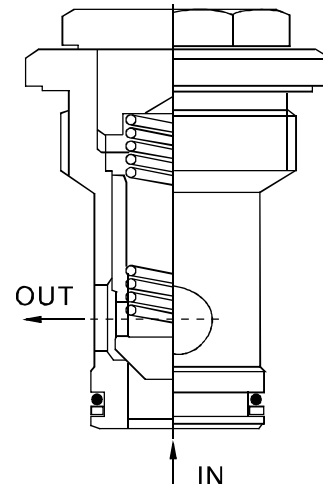
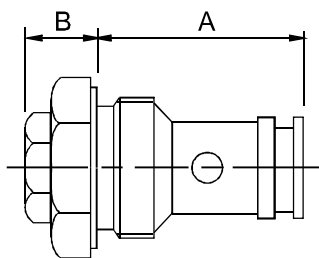
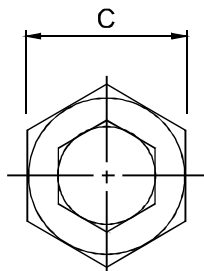
**3 CRACKING** 壓力  
A : 0.3kg/cm<sup>2</sup>  
B : 1kg/cm<sup>2</sup> C : 5kg/cm<sup>2</sup>

**2 SUBPLATE MOUNTING SIZE** 稱呼口徑  
02(1/4), 03(2/4), 06(3/4), 10(1 1/4)

**4 DESIGN NO** 設計編號

◆ **DIMENSIONS**

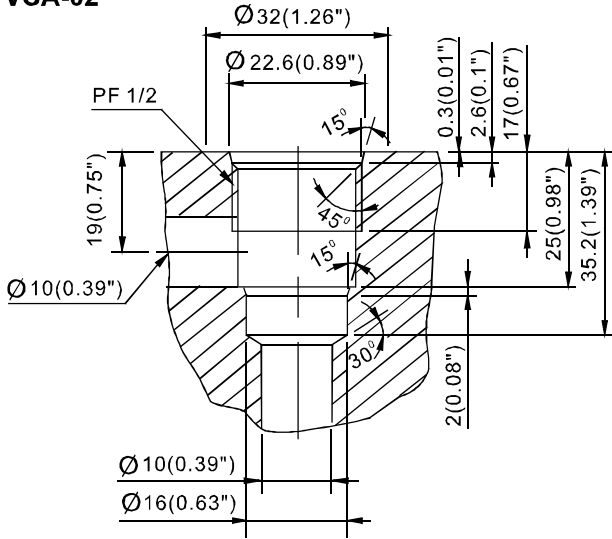
外型尺寸圖



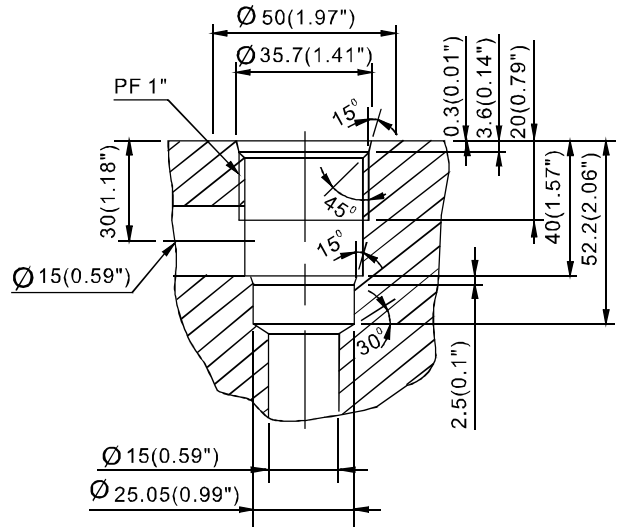
Model 型式	Size 尺寸		
	A	B	C
VCA-02	35	24	26
VCA-03	48	15	41
VCA-06	60	16	50
VCA-10	84	28	70
VCA-12	84	29	72

### ◆ CAVITIES DIMENSIONS 孔口尺寸圖

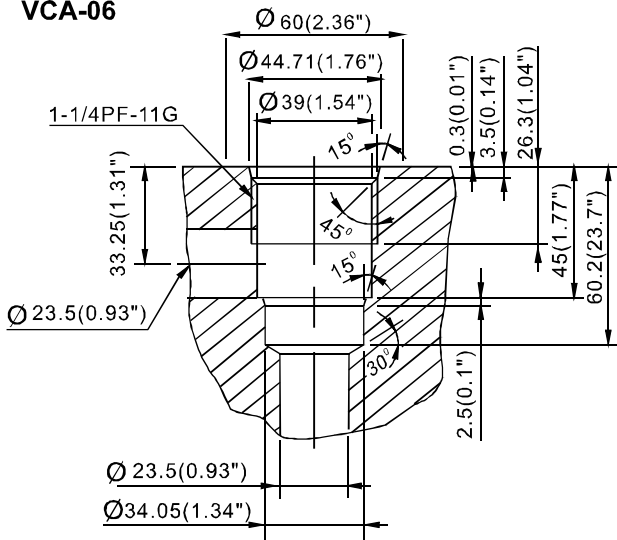
VCA-02



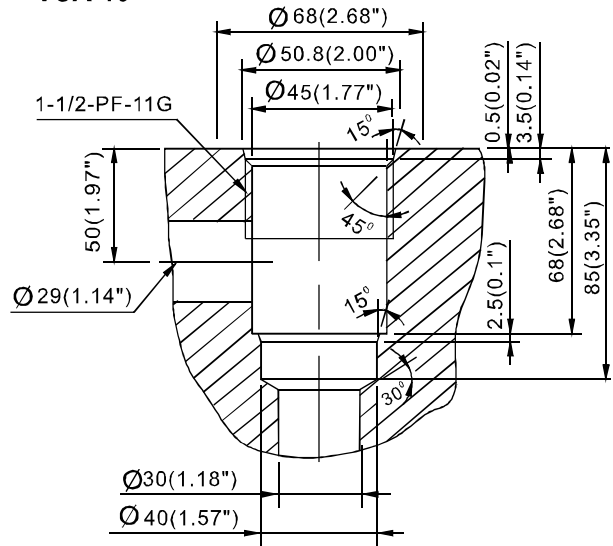
VCA-03



VCA-06



VCA-10



VCA-12

