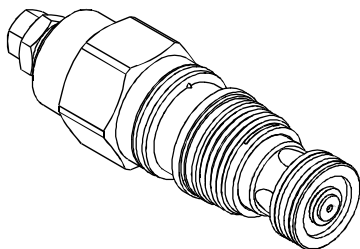


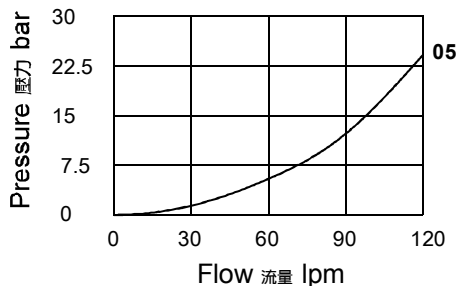
◆ **MODEL** 型 式

VCKC-03



◆ **PERFORMANCE**(Cartridge Only)

特性曲線



◆ **DESCRIPTION** 說明

This valve is a pilot to open check valve which is vented. The valve is insensitive to pressure at port 2 because the spring chamber is referenced out the back of the hex body.

This type of atmospherically referenced pilot-to-open check valves will eventually leak externally or allow moisture into the spring chamber.

此為先導液控單向閥，為透氣型。因彈簧室通過閥體六角口後端接通大氣，所以閥不受口2壓力影響。
透氣型的單向閥，這種通大氣型閥始終會有油液洩漏到彈簧室。

◆ **SPECIFICATIONS** 規 格

Model Number 型式號碼	Maximum Pressure 最大壓力 bar	Pilot Ratio 引導比例	Maximum Flow 最大流量 lpm	Weight 重量 Kg
VCKC-03	350 (5076 psi)	3:1	120 (31.70 gpm)	0.3 (0.66lbs)
Fluid Type 流體型式		ISO VG 32, 46, 68		
Viscosity 黏性 cSt		10~400 (59~1854 SSU)		
Operating Temperature 操作溫度 °C		-30~100 (-11~212°F)		
Contamination Level 污染標準		ISO4406. 20/18/15 NAS1638. 9		

◆ **HOW TO ORDER** 編號說明

1	2	3	4
VCKC	03	*	*

1 VALVE SERIES 系列名稱

VCKC = Cartridge Pilot Operated
Check Valve (Vented Type)
插入式引導止逆閥(透氣型)

2 SUBPLATE MOUNTING SIZE 稱呼口徑

03 :T-2A
Cavity 孔口:CST-2A
See Appendices-A 見附錄A
For Manifold See Appendices-B 油路板見附錄B

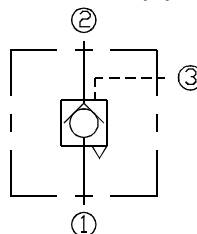
3 CRACKING PRESSURE 開啓壓力

05 : 0.5 bar (7psi)
20 : 2 bar (29psi)
35 : 3.5 bar (51psi)
50 : 5 bar (73psi)
70 : 7 bar (102psi)

4 ADJUSTMENT OPTION 調整選擇

<p>Non</p> <p>Non:Standard 無記號：標準型</p>	<p>Y</p> <p>Y:Manual Unload 手動卸載</p>
---	---

◆ **CONTROL PORT(S)** 動作形式



◆ **DIMENSIONS** 外型尺寸圖

