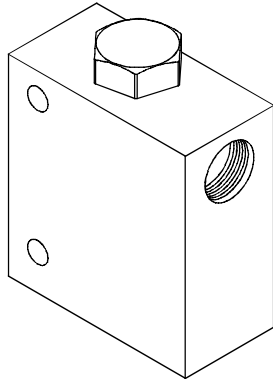
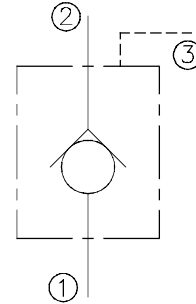


◆ **MODEL** 型式

VCKD-02



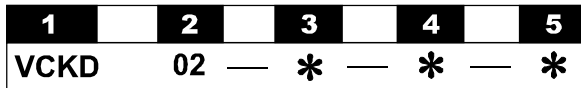
◆ **CONTROL PORT(S)** 動作形式



◆ **SPECIFICATIONS** 規格

Model Number 型式號碼	Operating Pressure 操作壓力 bar	Flow 流量 lpm	Pilot Ratio 引導比例	Weight 重量 Kg
VCKD-02	350 (5076 psi)	60 (15.85 gpm)	3:1	1.28 (2.82 lbs)
Fluid Type 流體型式		ISO VG 32, 46, 68		
Viscosity 黏性 cSt		10~400 (59~1854 SSU)		
Operating Temperature 操作溫度 °C		-15~70 (-5~158 °F)		
Contamination Level 污染標準		ISO4406. 21/19/16 NAS1638,10		

◆ **HOW TO ORDER** 編號說明



1 VALVE SERIES 系列名稱

VCKD= Cartridge Pilot Operated Check Valves
插入式引導止逆閥

2 SUBPLATE MOUNTING SIZE 稱呼口徑

02

3 PORTS DIMENSIONS 接口尺寸

A: 3/8
B: 1/2



Body Material 閥體材料	Maximum Pressure 最大壓力 bar	Weight 重量 Kg
Aluminum (standard) 鋁 (標準)	240 (3481 psi)	0.56 (1.23 lbs)
Steel 鋼	350 (5076 psi)	1.28 (2.82 lbs)

4 THREADED TYPE 螺紋規格

1P : PT 3G : PF(G) 5B : BSP
2N : NPT 4A : SAE

5 BODY MATERIAL 閥體材質

A : Aluminum 鋁合金
S : Steel 鋼

◆ **DIMENSIONS**

外型尺寸圖

