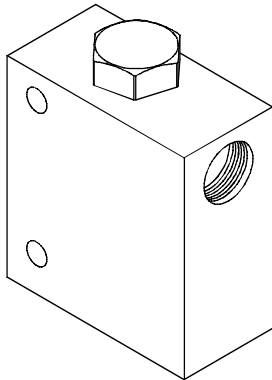


DIRECTIONAL VALVES 方向閥

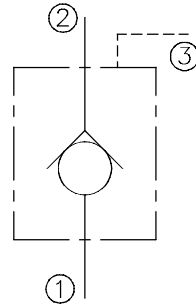
VCKD SERIES CARTRIDGE PILOT OPERATED CHECK VALVES vckd系列插入式引導止逆閥

◆ MODEL 型 式

VCKD-03



◆ CONTROL PORT(S) 動作形式



◆ SPECIFICATIONS 規 格

Model Number 型式號碼	Operating Pressure 操作壓力 bar	Flow 流量 lpm	Pilot Ratio 引導比例	Weight 重量 Kg
VCKD-03	350 (5076 psi)	120 (31.70 gpm)	3:1	2.03 (4.48 lbs)
Fluid Type 流體型式		ISO VG 32, 46, 68		
Viscosity 黏性 cSt		10~400 (59~1854 SSU)		
Operating Temperature 操作溫度 °C		-15~70 (-5~158 °F)		
Contamination Level 污染標準		ISO4406. 21/19/16 NAS1638,10		

◆ HOW TO ORDER 編號說明

1	2	3	4	5
VCKD	03	*	*	*

1 VALVE SERIES 系列名稱

VCKD= Cartridge Pilot Operated Check Valves
插入式引導止逆閥

2 SUBPLATE MOUNTING SIZE 稱呼口徑

03: 1/2

3 PORTS DIMENSIONS 接口尺寸

A: 3/4
B: 1/2



Body Material 閥體材料	Maximum Pressure 最大壓力 bar	Weight 重量 Kg
Aluminum (standard) 鋁 (標準)	240 (3481 psi)	0.86 (1.9 lbs)
Steel 鋼	350 (5076 psi)	2.03 (4.48 lbs)

4 THREADED TYPE 螺紋規格

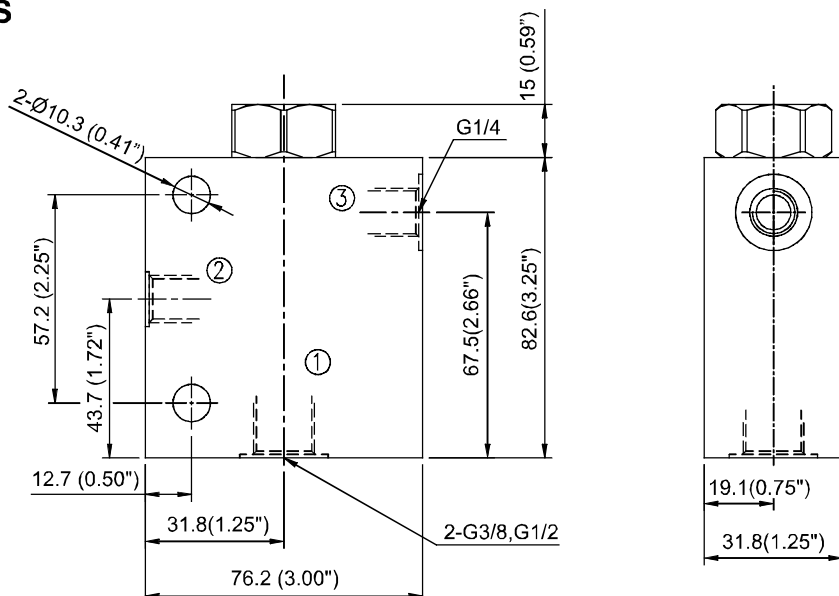
1P : PT 3G : PF(G) 5B : BSP
2N : NPT 4A : SAE

5 BODY MATERIAL 閥體材質

A : Aluminum 鋁合金
S : Steel 鋼

◆ DIMENSIONS 外型尺寸圖

外型尺寸圖



D
400

VCKD