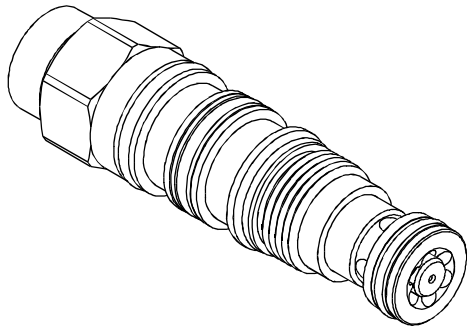
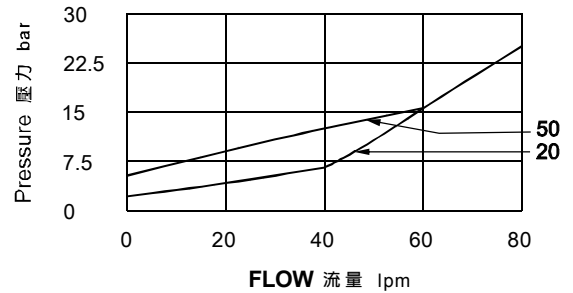


◆ **MODEL** 型 式
VCKV-02



◆ **PERFORMANCE**(Cartridge Only)

特性曲線



◆ **SPECIFICATIONS** 規 格

Model Number 型式號碼	Maximum Pressure 最大壓力 bar	Pilot Ratio 引導比例	Maximum Flow 最大流量 lpm	Weight 重量 Kg
VCKV-02	350 (5076 psi)	3:1	60 (15.85 gpm)	0.20 (0.44lbs)
Fluid Type 流體型式		ISO VG 32, 46, 68		
Viscosity 黏性 cSt		10~400 (59~1854 SSU)		
Operating Temperature 操作溫度 °C		-30~100 (-22~212°F)		
Contamination Level 污染標準		ISO4406. 21/19/16 NAS1638,10		

◆ **HOW TO ORDER** 編號說明

1	2	3	4
VCKV	02	— *	— *

1 VALVE SERIES 系列名稱
VCKV = CARTRIDGE PILOT OPERATED CHECK VALVES
插入式引導止逆閥

2 SUBPLATE MOUNTING SIZE 稱呼口徑

02 : T-21A
Cavity 孔口: CST-21A
See Page Appendixes-A_009
見附錄A_009頁面

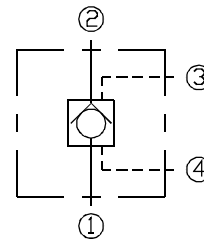
3 BIAS SPRING 開啓壓力

03 : 0.3 bar (4psi)
10 : 1 bar (15psi)
20 : 2 bar (29psi)
50 : 5 bar (73psi)
70 : 7 bar (102psi)

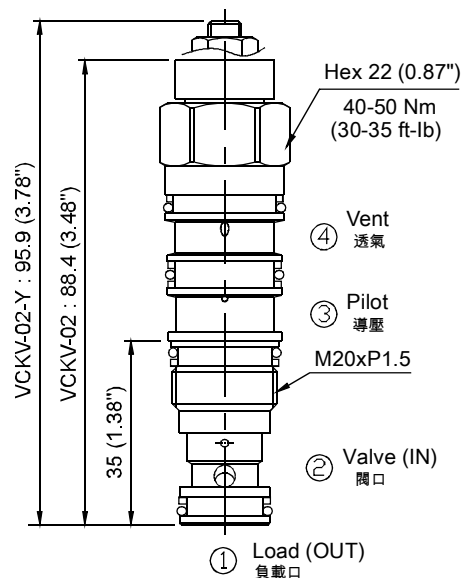
4 ADJUSTMENT OPTION 調整選擇

Non Non: Standard 無記號: 標準型		Y Y: Manual Load 手動卸載	
---	--	------------------------------------	--

◆ **CONTROL PORT(S)** 動作形式

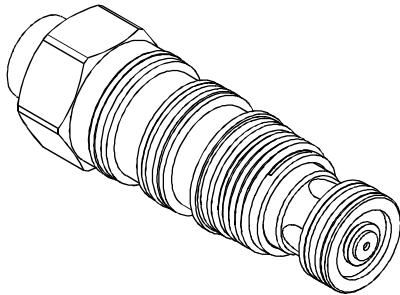


◆ **DIMENSIONS** 外型尺寸圖



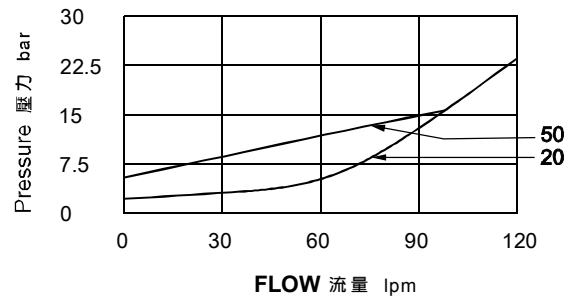
◆ MODEL 型 式

VCKV-03



◆ PERFORMANCE (Cartridge Only)

特性曲線



◆ SPECIFICATIONS 規 格

Model Number 型式號碼	Maximum Pressure 最大壓力 bar	Maximum Flow 最大流量 lpm	Weight 重量 Kg
VCKV-03	350 (5076 psi)	120 (31.70 gpm)	0.32 (0.71lbs)
Fluid Type 流體型式		ISO VG 32, 46, 68	
Viscosity 黏性 cSt		10~400 (59~1854 SSU)	
Operating Temperature 操作溫度 °C		-30~100 (-22~212°F)	
Contamination Level 污染標準		ISO4406. 21/19/16 NAS1638,10	

◆ HOW TO ORDER 編號說明

1	2	3	4
VCKV	03	*	*

1 VALVE SERIES 系列名稱

VCKV = CARTRIDGE PILOT OPERATED CHECK VALVES
插入式引導止逆閥

2 SUBPLATE MOUNTING SIZE 稱呼口徑

03 : T-22A
Cavity 孔口: CST-22A
See Page Appendixes-A_009
見附錄A_009頁面

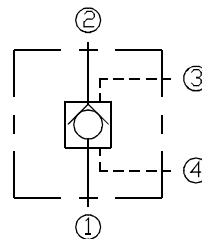
3 BIAS SPRING 開啓壓力

05 : 0.5 bar (7psi)
20 : 2 bar (29psi)
35 : 3.5 bar (51psi)
50 : 5 bar (73psi)
70 : 7 bar (102psi)

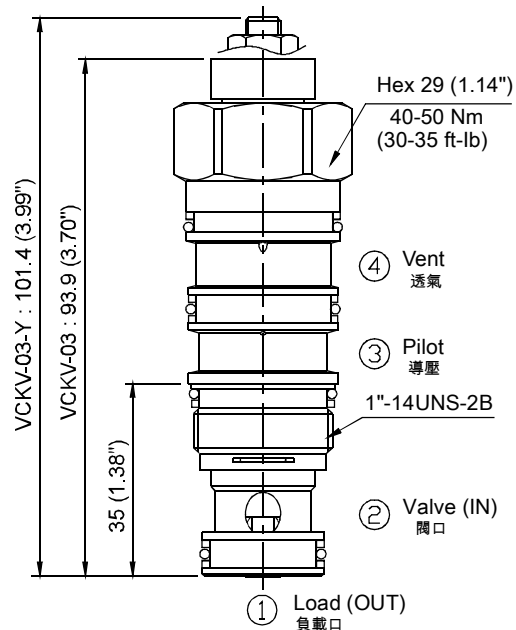
4 ADJUSTMENT OPTION 調整選擇

<p>Non</p> <p>Non: Standard 無記號: 標準型</p>	<p>Y</p> <p>Y: Manual Load 手動卸載</p>
---	--

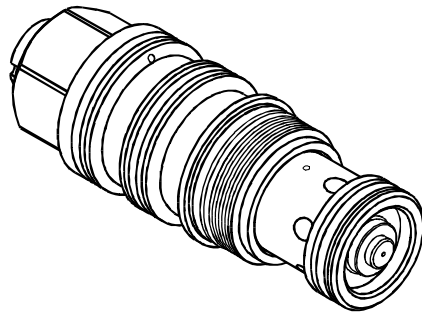
◆ CONTROL PORT(S) 動作形式



◆ DIMENSIONS 外型尺寸圖

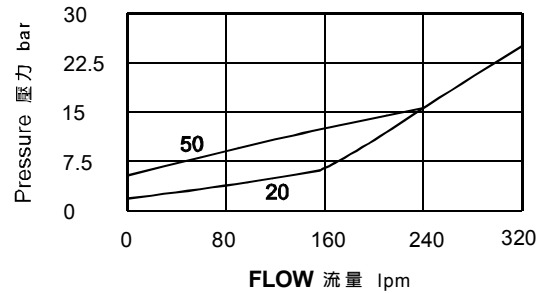


◆ **MODEL** 型式
VCKV-06



◆ **PERFORMANCE**(Cartridge Only)

特性曲線



◆ **SPECIFICATIONS** 規格

Model Number 型式號碼	Maximum Pressure 最大壓力 bar	Maximum Flow 最大流量 lpm	Weight 重量 Kg
VCKV-06	350 (5076 psi)	240 (63.40 gpm)	0.7 (1.54lbs)
Fluid Type 流體型式		ISO VG 32, 46, 68	
Viscosity 黏性 cSt		10~400 (59~1854 SSU)	
Operating Temperature 操作溫度 °C		-30~100 (-22~212°F)	
Contamination Level 污染標準		ISO4406. 21/19/16 NAS1638,10	

◆ **HOW TO ORDER** 編號說明

1	2	3	4
VCKV	06	— *	— *

1 VALVE SERIES 系列名稱

VCKV =CARTRIDGE PILOT OPERATED CHECK VALVES
插入式引導止逆閥

2 SUBPLATE MOUNTING SIZE 稱呼口徑

06 :T-23A
Cavity 孔口:CST-23A
See Page Appendixes-A_009
見附錄A_009頁面

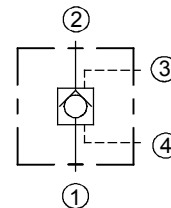
3 BIAS SPRING 開啓壓力

05 : 0.3 bar (4 psi)
20 : 2.0 bar (29 psi)

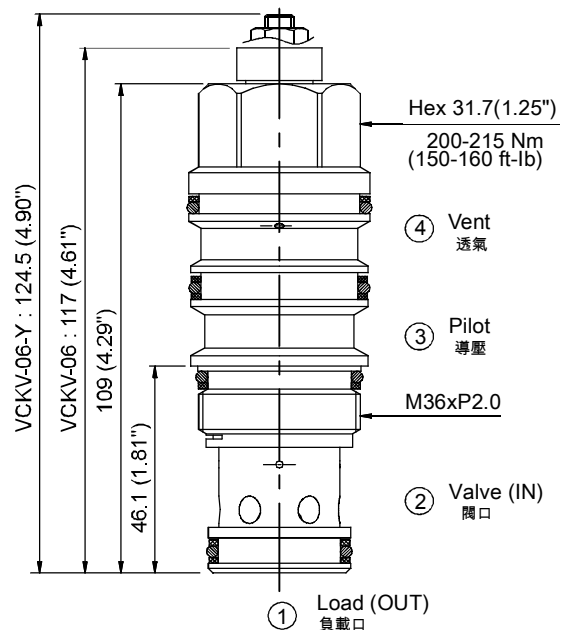
4 ADJUSTMENT OPTION 調整選擇

Non Non:Standard 無記號：標準型		Y Y:Manual Load 手動卸載	
---------------------------------------	--	-----------------------------------	--

◆ **CONTROL PORT(S)** 動作形式

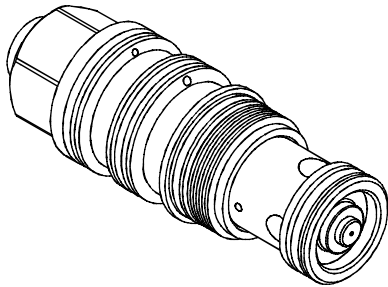


◆ **DIMENSIONS** 外型尺寸圖



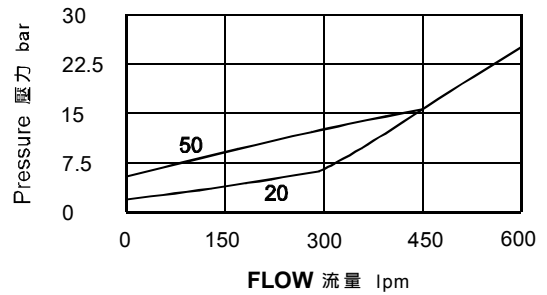
◆ MODEL 型 式

VCKV-10



◆ PERFORMANCE (Cartridge Only)

特性曲線



◆ SPECIFICATIONS 規 格

Model Number 型式號碼	Maximum Pressure 最大壓力 bar	Maximum Flow 最大流量 lpm	Weight 重量 Kg
VCKV-10	350 (5076 psi)	480 (126.80 gpm)	1.6 (3.53lbs)
Fluid Type 流體型式		ISO VG 32, 46, 68	
Viscosity 黏性 cSt		10~400 (59~1854 SSU)	
Operating Temperature 操作溫度 °C		-30~100 (-22~212°F)	
Contamination Level 污染標準		ISO4406. 21/19/16 NAS1638,10	

◆ HOW TO ORDER 編號說明

1	2	3	4
VCKV	10	— *	— *

1 VALVE SERIES 系列名稱

VCKV = CARTRIDGE PILOT OPERATED CHECK VALVES
插入式引導止逆閥

2 SUBPLATE MOUNTING SIZE 稱呼口徑

10 : T-24A
Cavity 孔口: CST-24A
See Page Appendixes-A_010
見附錄A_010頁面

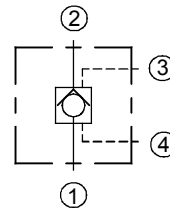
3 BIAS SPRING 開啓壓力

05 : 0.3 bar (4 psi)
20 : 2.0 bar (29 psi)
50 : 5.0 bar (73 psi)

4 ADJUSTMENT OPTION 調整選擇

Non	Y
Non-Standard 無記號：標準型	Y: Manual Load 手動卸載

◆ CONTROL PORT(S) 動作形式



◆ DIMENSIONS 外型尺寸圖

