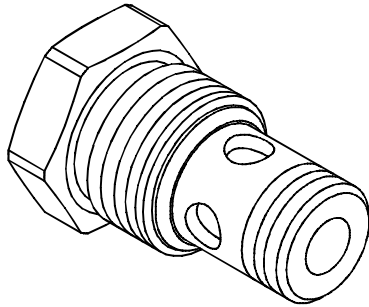
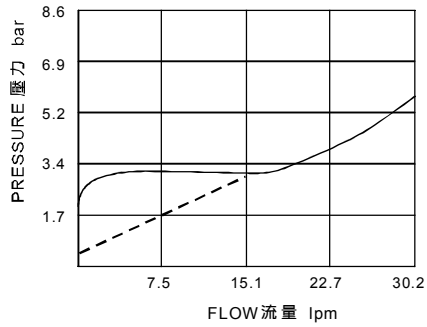


### ◆ MODEL 型 式

VCV-08-\*\*-21



### ◆ PERFORMANCE (Cartridge Only) 特性曲線



### ◆ SPECIFICATIONS 規 格

| Model Number<br>型式號碼          | Operating Pressure<br>操作壓力 bar | Flow<br>流量 lpm               | Weight<br>重量 Kg |
|-------------------------------|--------------------------------|------------------------------|-----------------|
| VCV-08-**-21                  | 250 (3626psi)                  | 30 (7.93 gpm)                | 0.06 (0.13 lbs) |
| Fluid Type 流體型式               |                                | ISO VG 32, 46, 68            |                 |
| Viscosity 黏性 cSt              |                                | 10~400 (59~1854 SSU)         |                 |
| Operating Temperature 操作溫度 °C |                                | -30~100 (-22~212°F)          |                 |
| Contamination Level 污染標準      |                                | ISO4406. 21/19/16 NAS1638,10 |                 |

### ◆ HOW TO ORDER 編號說明

| 1   | 2  | 3 | 4       |
|-----|----|---|---------|
| VCV | 08 | — | 20 — 21 |

#### 1 VALVE SERIES 系列名稱

VCV= Check Valves 止逆閥

#### 2 SUBPLATE MOUNTING SIZE 稱呼口徑

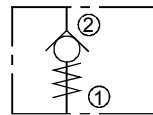
Size:08  
Cavity 孔口:CS08-2N  
See Page Appendixes-A\_001  
見附錄A\_001 頁面

#### 3 BIAS SPRING 開啓壓力

20 : 2 bar (29psi)

#### 4 DESIGN NO 設計編號

### ◆ CONTROL PORT(S) 動作形式



### ◆ DIMENSIONS 外型尺寸圖

