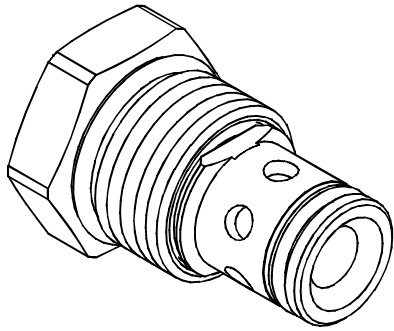


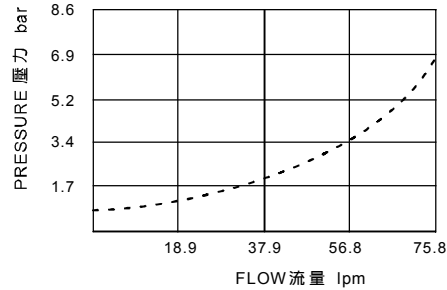
◆ MODEL 型 式

VCV-10



◆ PERFORMANCE (Cartridge Only)

特性曲線



◆ SPECIFICATIONS 規 格

Model Number 型式號碼	Operating Pressure 操作壓力 bar	Flow 流量 lpm	Weight 重量 Kg
VCV-10	350 (5076psi)	75 (19.81 gpm)	0.08 (0.18 lbs)
Fluid Type 流體型式		ISO VG 32, 46, 68	
Viscosity 黏性 cSt		10~400 (59~1854 SSU)	
Operating Temperature 操作溫度 °C		-30~100 (-22~212°F)	
Contamination Level 污染標準		ISO4406. 21/19/16 NAS1638,10	

◆ HOW TO ORDER 編號說明

1	2	3	4
VCV	10	— 05	— 10

1 VALVE SERIES 系列名稱
VCV= Check Valves 止逆閥

2 SUBPLATE MOUNTING SIZE 稱呼口徑

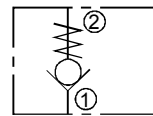
Size:10
Cavity 孔口:CS10-2N
See Page Appendixes-A_001
見附錄A_001 頁面

3 BIAS SPRING 開啓壓力

05 : 0.3bar (4psi)
10 : 1bar(14.5psi)
20 : 2 bar (29psi)
50 : 4 bar (58psi)
70 : 7bar (101.5psi)
200 : 20.4 bar (300psi)

4 DESIGN NO 設計編號

◆ CONTROL PORT(S) 動作形式



◆ DIMENSIONS 外型尺寸圖

