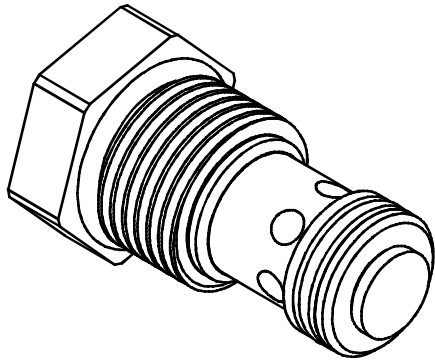
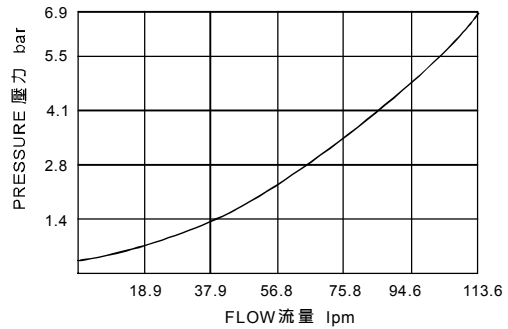


◆ MODEL 型 式

VCV-12-21



◆ PERFORMANCE (Cartridge Only) 特性曲線



◆ SPECIFICATIONS 規 格

Model Number 型式號碼	Operating Pressure 操作壓力 bar	Flow 流量 lpm	Weight 重量 Kg
VCV-12-21	250 (3626 psi)	100 (26.42 gpm)	0.2 (0.44 lbs)
Fluid Type 流體型式		ISO VG 32, 46, 68	
Viscosity 黏性 cSt		10~400 (59~1854 SSU)	
Operating Temperature 操作溫度 °C		-30~100 (-22~212°F)	
Contamination Level 污染標準		ISO4406. 21/19/16 NAS1638,10	

◆ HOW TO ORDER 編號說明

1	2	3	4
VCV	12	*	21

1 VALVE SERIES 系列名稱

VCV= Check Valves 止逆閥

2 SUBPLATE MOUNTING SIZE 稱呼口徑

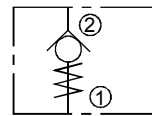
Size: 12
Cavity 孔口: CS12-2N
See Page Appendixes-A_001
見附錄A_001 頁面

3 BIAS SPRING 開啓壓力

05 : 0.5 bar (6psi)
20 : 1.8 bar (26psi)
50 : 3.8 bar (56psi)

4 DESIGN NO 設計編號

◆ CONTROL PORT(S) 動作形式



◆ DIMENSIONS 外型尺寸圖

