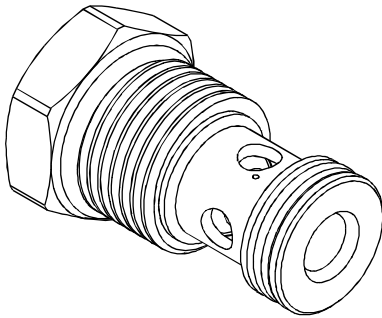


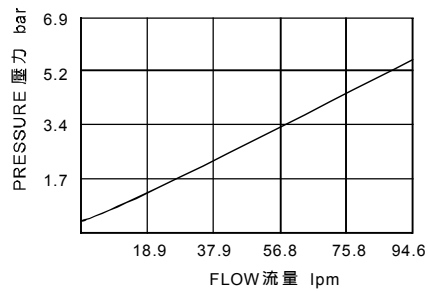
### ◆ MODEL 型 式

**VCV-12U**



### ◆ PERFORMANCE (Cartridge Only)

特性曲線



### ◆ SPECIFICATIONS 規 格

Model Number 型式號碼	Operating Pressure 操作壓力 bar	Flow 流量 lpm	Weight 重量 Kg
VCV-12U	350 (5076psi)	94 (24.83 gpm)	0.18 (0.40 lbs)
<b>Fluid Type</b> 流體型式		ISO VG 32, 46, 68	
<b>Viscosity</b> 黏性 cSt		10~400 (59~1854 SSU)	
<b>Operating Temperature</b> 操作溫度 °C		-30~100 (-22~212°F)	
<b>Contamination Level</b> 污染標準		ISO4406. 21/19/16 NAS1638,10	

### ◆ HOW TO ORDER 編號說明

1	2	3	4
VCV	12U	— 05	— 10

#### 1 VALVE SERIES 系列名稱

VCV= Check Valves 止逆閥

#### 2 SUBPLATE MOUNTING SIZE 稱呼口徑

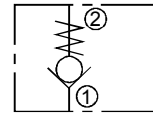
Size: 12U  
Cavity 孔口: CS12U-2N

#### 3 BIAS SPRING 開啓壓力

05 : 0.5 bar (7psi)  
20 : 2 bar (29psi)  
50 : 4 bar (58psi)

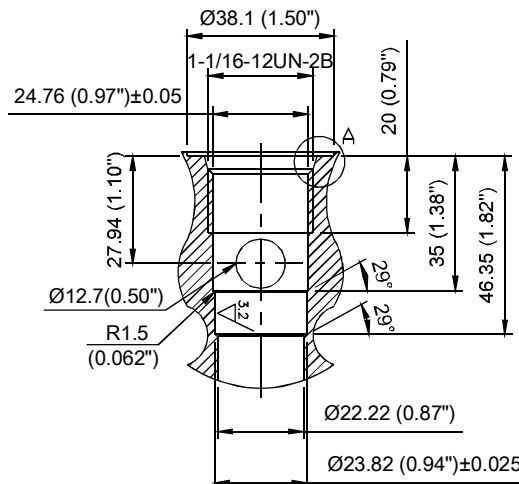
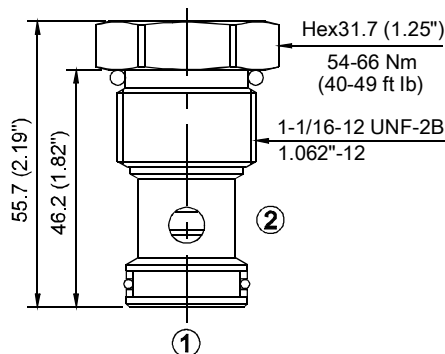
#### 4 DESIGN NO 設計編號

### ◆ CONTROL PORT(S) 動作形式



### ◆ DIMENSIONS 外型尺寸圖

外型尺寸圖



### CS12U-2N

