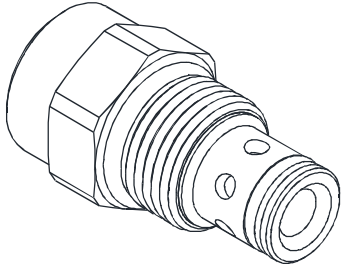


DIRECTIONAL VALVES 方向閥

VCVR SERIES CHECK VALVE WITH THERMAL RELIEF

VCVR系列熱溢流單向閥

◆ MODEL 型式 VCVR-10



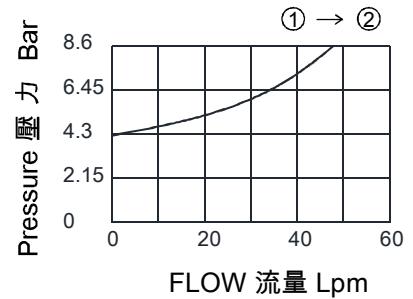
◆ DESCRIPTION 說明

Hydraulic check valve for use as a blocking or load-holding device. The cartridge incorporates a low flow thermal relief valve intended to prevent cylinder damage resulting from temperature-induced pressure intensification.

Flow from ① to ②, while blocking oil flow in the opposite direction. The pressure at ② exceeds the thermal relief valve setting, a small amount of oil will be allowed to pass from ② to ①, Preventing cylinder damage from pressure intensification. But it is not intended for use in dynamic pressure limiting applications.

液壓單向閥，用作單向截止或負載保護。該單向閥內置低流量熱油溢流閥，專門用來防止由於溫度引起的壓力增高而導致的油缸損壞。油液從①流向②，同時截止油液反向流動。②處的壓力超過熱油溢流閥設置，則少量油液將從②流向①，從而保護油缸在壓力增高時不受損壞。但不可用來限制動態壓力。

◆ PERFORMANCE 特性曲線



◆ SPECIFICATIONS 規格

Model Number 型式號碼	Operating Pressure 操作壓力 bar	Check Bias Spring At Crack 止逆閥開啓壓力 bar	Relief Setting 溢流設定 bar	Flow 流量 lpm	Weight 重量 Kg
VCVR-10	350 (5076 psi)	4.5 (65 psi)	345 (5004 psi)	48 (12.68gpm)	0.08 (0.18 lbs)
Fluid Type 流體型式			ISO VG 32, 46, 68		
Viscosity 黏性 cSt			10~400 (59~1854 SSU)		
Operating Temperature 操作溫度 °C			-15~70 (-5~158 °F)		
Contamination Level 污染標準			ISO4406. 21/19/16 NAS1638,10		

◆ HOW TO ORDER 編號說明

1	2	3
VCVR	10	*

1 VALVE SERIES 系列名稱

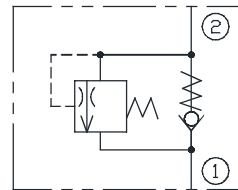
VCVR = CHECK VALVE WITH THERMAL RELIEF
熱溢流單向閥

2 SUBPLATE MOUNTING SIZE 稱呼口徑

Size : 10
Cavity 孔口:CS10-2N
See Page Appendixes-A_001
見附錄A_001 頁面

3 DESIGN NO 設計編號

◆ CONTROL PORT(S) 動作形式



◆ DIMENSIONS 外型尺寸圖

