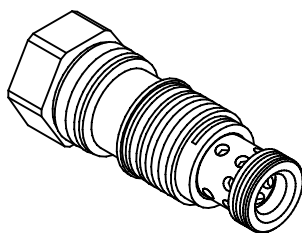
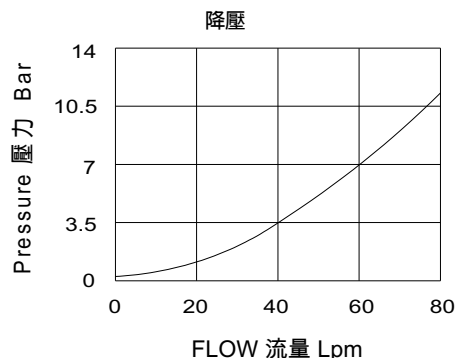


◆ **MODEL** 型 式

VCXA-02



◆ **PERFORMANCE** 特性曲線



◆ **SPECIFICATIONS** 規 格

Model Number 型式號碼	Operating Pressure 操作壓力 bar	Flow 流量 lpm	Weight 重量 Kg
VCXA-02	350 (5076 psi)	60 (15.85 gpm)	0.13 (0.29 lbs)
Fluid Type 流體型式		ISO VG 32, 46, 68	
Viscosity 黏性 cSt		10~400 (59~1854 SSU)	
Operating Temperature 操作溫度 °C		-15~70 (-5~158 °F)	
Contamination Level 污染標準		ISO4406. 21/19/16 NAS1638,10	

◆ **HOW TO ORDER** 編號說明

1	2	3
VCXA	02	*

1 VALVE SERIES 系列名稱

VCXA = CARTRIDGE CHECK, PILOT-TO-CLOSE VALVES
插入式導壓關止逆閥

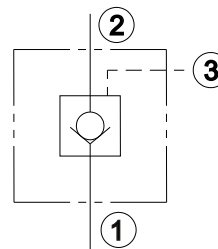
2 SUBPLATE MOUNTING SIZE 稱呼口徑

02 : T-11A
Cavity 孔口 : CST-11A
See Page Appendixes-A_006
見附錄A_006 頁面

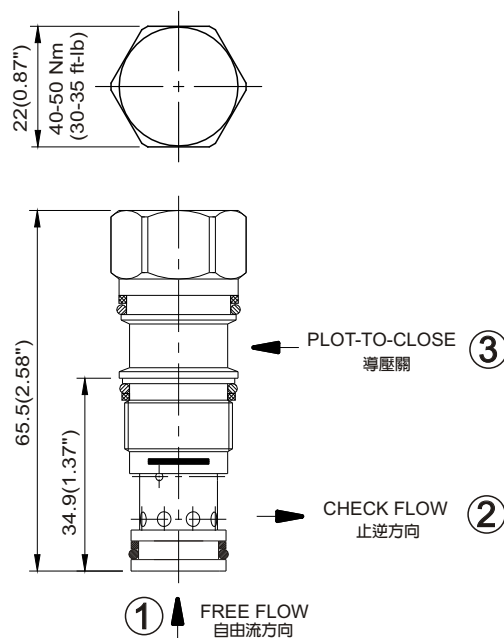
3 BIAS SPRING 開啓壓力

05 : 0.5 bar (7.25 psi)
20 : 2 bar (29 psi)
50 : 5 bar (73 psi)
70 : 7 bar (101.5 psi)

◆ **CONTROL PORT(S)** 動作形式



◆ **DIMENSIONS** 外型尺寸圖

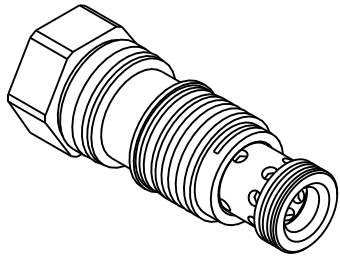


DIRECTIONAL VALVES 方向閥

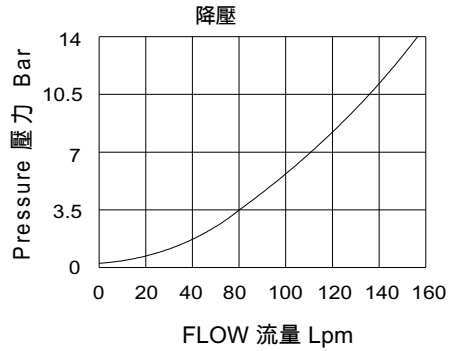
VCXA SERIES CARTRIDGE CHECK , PILOT-TO-CLOSE VALVES VCXA系列插入式導壓關止逆閥

◆ MODEL 型式

VCXA-03



◆ PERFORMANCE 特性曲線



◆ SPECIFICATIONS 規格

Model Number 型式號碼	Operating Pressure 操作壓力 bar	Flow 流量 lpm	Weight 重量 Kg
VCXA-03	350 (5076 psi)	140 (36.98 gpm)	0.23 (0.51 lbs)
Fluid Type 流體型式		ISO VG 32, 46, 68	
Viscosity 黏性 cSt		10~400 (59~1854 SSU)	
Operating Temperature 操作溫度 °C		-15~70 (-5~158 °F)	
Contamination Level 污染標準		ISO4406. 21/19/16 NAS1638,10	

◆ HOW TO ORDER 編號說明

1	2	3
VCXA	03	*

1 VALVE SERIES 系列名稱

VCXA = CARTRIDGE CHECK , PILOT-TO-CLOSE VALVES
插入式導壓關止逆閥

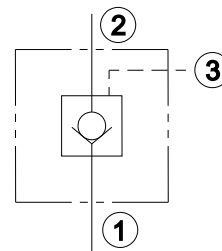
2 SUBPLATE MOUNTING SIZE 稱呼口徑

03 : T-2A
Cavity 孔口 : CST-2A
See Page Appendixes-A_006
見附錄A_006 頁面

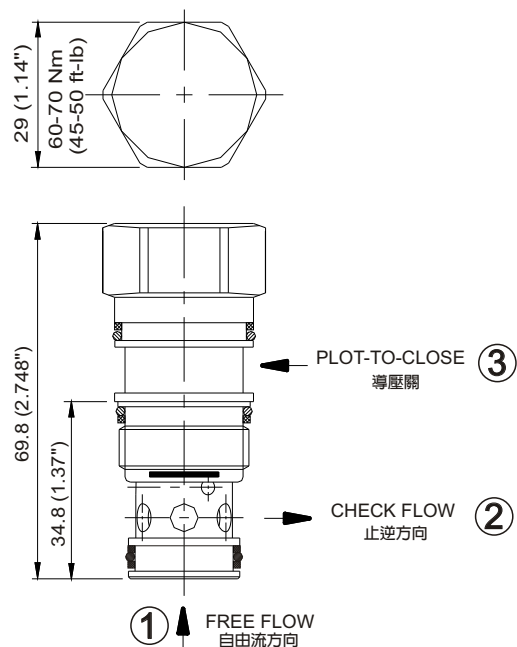
3 BIAS SPRING 開啓壓力

05 : 0.5 bar (7.25 psi)
20 : 2 bar (29 psi)
50 : 5bar (73 psi)
70 : 7bar (101.5 psi)

◆ CONTROL PORT(S) 動作形式

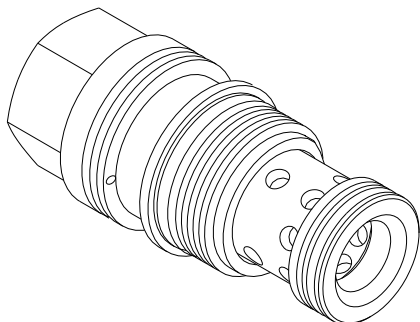


◆ DIMENSIONS 外型尺寸圖

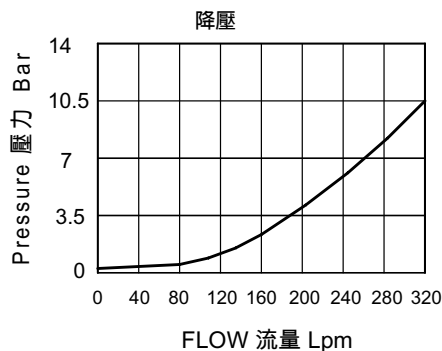


◆ **MODEL** 型 式

VCXA-06



◆ **PERFORMANCE** 特性曲線



◆ **SPECIFICATIONS** 規 格

Model Number 型式號碼	Operating Pressure 操作壓力 bar	Flow 流量 lpm	Weight 重量 Kg
VCXA-06	350 (5076 psi)	320 (84.54 gpm)	1.35 (2.97 lbs)
Fluid Type 流體型式		ISO VG 32, 46, 68	
Viscosity 黏性 cSt		10~400 (59~1854 SSU)	
Operating Temperature 操作溫度 °C		-15~70 (-5~158 °F)	
Contamination Level 污染標準		ISO4406. 21/19/16 NAS1638,10	

◆ **HOW TO ORDER** 編號說明

1	2	3
VCXA	06	*

1 VALVE SERIES 系列名稱

VCXA = CARTRIDGE CHECK, PILOT-TO-CLOSE VALVES
插入式導壓關止逆閥

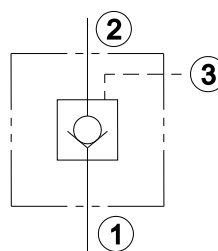
2 SUBPLATE MOUNTING SIZE 稱呼口徑

06 : T-17A
Cavity 孔口 : CST-17A
See Page Appendixes-A_007
見附錄A_007 頁面

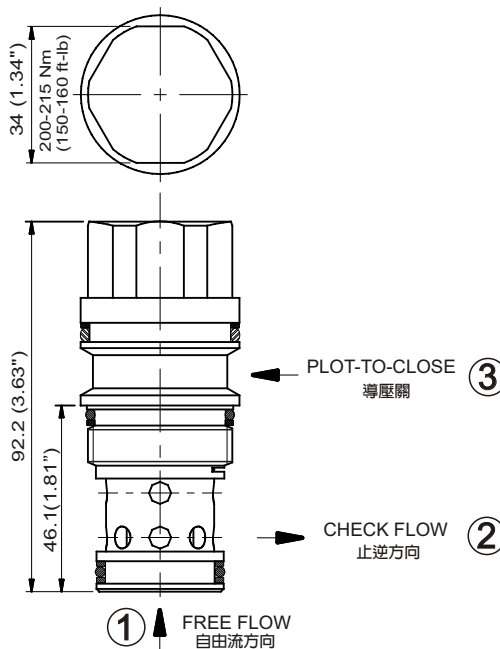
3 BIAS SPRING 開啓壓力

05 : 0.5 bar (7.25psi)
20 : 2 bar (29psi)
40 : 4 bar (58psi)
50 : 5 bar (73psi)
70 : 7 bar (101.5psi)

◆ **CONTROL PORT(S)** 動作形式



◆ **DIMENSIONS** 外型尺寸圖

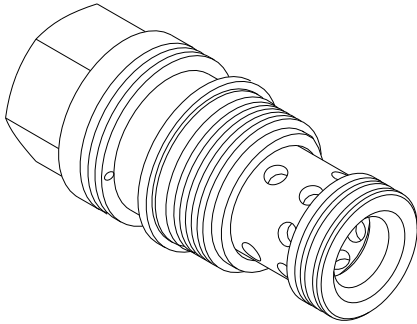


DIRECTIONAL VALVES 方向閥

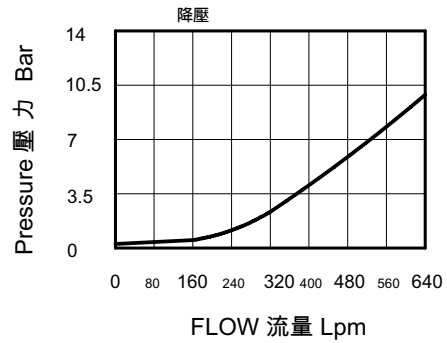
VCXA SERIES CARTRIDGE CHECK , PILOT-TO-CLOSE VALVES VCXA系列插入式導壓關止逆閥

◆ MODEL 型式

VCXA-10



◆ PERFORMANCE 特性曲線



◆ SPECIFICATIONS 規格

Model Number 型式號碼	Operating Pressure 操作壓力 bar	Flow 流量 lpm	Weight 重量 Kg
VCXA-10	350 (5076 psi)	640 (169.07 gpm)	1.3 (2.87 lbs)
Fluid Type 流體型式		ISO VG 32, 46, 68	
Viscosity 黏性 cSt		10~400 (59~1854 SSU)	
Operating Temperature 操作溫度 °C		-15~70 (-5~158 °F)	
Contamination Level 污染標準		ISO4406. 21/19/16 NAS1638,10	

◆ HOW TO ORDER 編號說明

1	2	3
VCXA	10	*

1 VALVE SERIES 系列名稱

VCXA = CARTRIDGE CHECK , PILOT-TO-CLOSE VALVES
插入式導壓關止逆閥

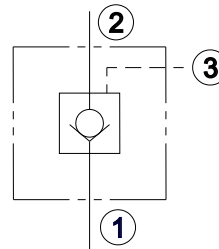
2 SUBPLATE MOUNTING SIZE 稱呼口徑

10 : T-19A
Cavity 孔口 : CST-19A
See Page Appendixes-A_007
見附錄A_007 頁面

3 BIAS SPRING 開啓壓力

03 : 0.3 bar (4.35 psi)
05 : 0.5 bar (7.25 psi)
20 : 2 bar (29 psi)
50 : 5 bar (73 psi)

◆ CONTROL PORT(S) 動作形式



◆ DIMENSIONS 外型尺寸圖

