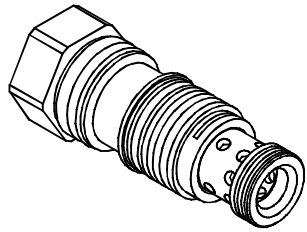
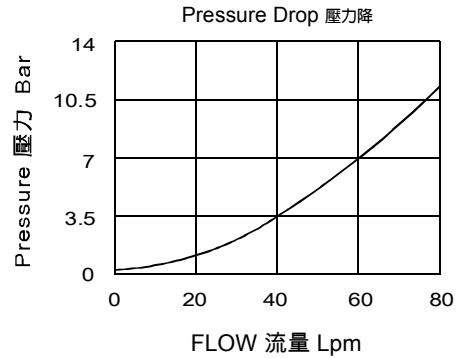


◆ **MODEL** 型式  
**VCXA-02**



◆ **PERFORMANCE** 特性曲線



◆ **SPECIFICATIONS** 規格

| Model Number<br>型式號碼                 | Operating Pressure<br>操作壓力 bar | Pilot Ratio<br>引導比例 | Flow<br>流量 lpm             | Maximum Leakage<br>最大洩漏量 cc/min. | Weight<br>重量 Kg |
|--------------------------------------|--------------------------------|---------------------|----------------------------|----------------------------------|-----------------|
| VCXA-02                              | 350 (5076 psi)                 | 1.8:1               | 60 (15.85 gpm)             | 0.07 (1 drops/min)               | 0.13 (0.29 lbs) |
| <b>Fluid Type</b> 流體型式               |                                |                     | ISO VG 32, 46, 68          |                                  |                 |
| <b>Viscosity</b> 黏性 cSt              |                                |                     | 10~400 (59~1854 SSU)       |                                  |                 |
| <b>Operating Temperature</b> 操作溫度 °C |                                |                     | -30~100 (-22~212°F)        |                                  |                 |
| <b>Contamination Level</b> 污染標準      |                                |                     | ISO4406.20/18/15 NAS1638.9 |                                  |                 |

◆ **HOW TO ORDER** 編號說明

| 1    | 2  | 3 |
|------|----|---|
| VCXA | 02 | * |

**1 VALVE SERIES** 系列名稱  
VCXA = Cartridge Check, Pilot-to-close Valves  
插入式導壓關止逆閥

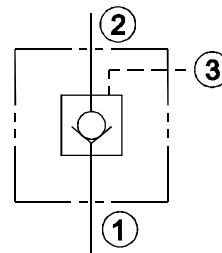
**2 SUBPLATE MOUNTING SIZE** 稱呼口徑

02 : T-11A  
Cavity 孔口 : CST-11A  
See Appendixes-A 見附錄A  
For Manifold See Appendixes-B 油路板見附錄B

**3 BIAS SPRING** 開啓壓力

05 : 0.5 bar (7.25 psi)  
20 : 2 bar (29 psi)  
50 : 5 bar (73 psi)  
70 : 7 bar (101.5 psi)

◆ **CONTROL PORT(S)** 動作形式



◆ **DIMENSIONS** 外型尺寸圖

