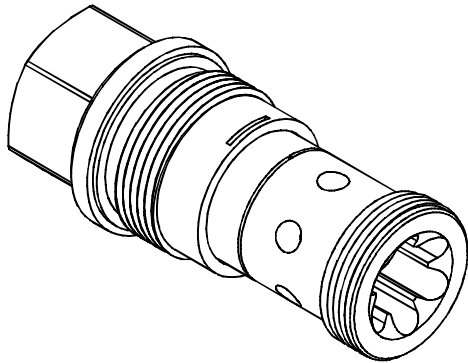


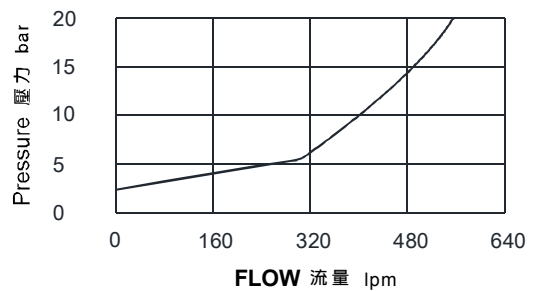
◆ MODEL 型式

VCXE-10



◆ PERFORMANCE (Cartridge Only)

特性曲線



◆ SPECIFICATIONS 規格

Model Number 型式號碼	Operating Pressure 操作壓力 bar	Flow 流量 lpm	Weight 重量 Kg
VCXE-10	350 (5076 psi)	480 (126.8 gpm)	1.3 (2.87 lbs)
Fluid Type 流體型式		ISO VG 32, 46, 68	
Viscosity 黏性 cSt		10~400 (59~1854 SSU)	
Operating Temperature 操作溫度 °C		-30~100 (-22~212°F)	
Contamination Level 污染標準		ISO4406. 21/19/16 NAS1638,10	

◆ HOW TO ORDER 編號說明

1	2	3
VCXE	10	05

1 VALVE SERIES 系列名稱

VCXE= Check Valves 止逆閥

2 PORTING 閥口

10: T-18A

Cavity 孔口: CST-18A

See Page Appendixes-A_007

見附錄A_007 頁面

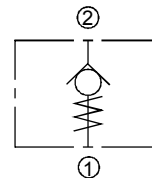
3 BIAS SPRING 開啓壓力

05: 0.35 bar (5psi)

20: 2 bar (29psi)

50: 5 bar (73psi)

◆ CONTROL PORT(S) 動作形式



◆ DIMENSIONS 外型尺寸圖

