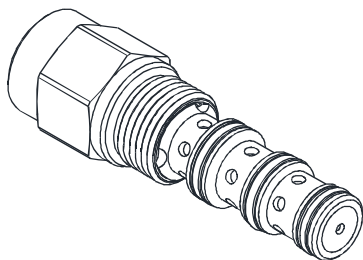


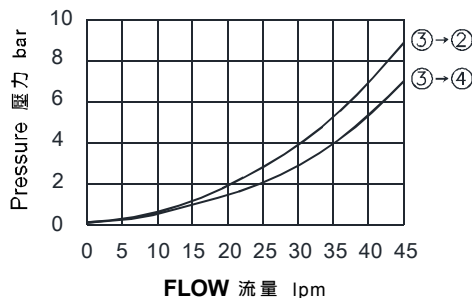
◆ **MODEL** 型 式

VEPO-10



◆ **PERFORMANCE**(Cartridge Only)

特性曲線



◆ **DESCRIPTION** 說 明

A cartridge-style, pilot-operated, hydraulic directional valve for three-way circuits requiring remote pilot actuation. In unpiloted, the item allows flow from 3 to 4 while blocking at 2. On remote pilot signal at 1, the valve shifts to allow flow between 3 and 2 while blocking at 4.

插入式液控方向閥，用於遙控三通油路。

無液控時，允許油液從3向4流動，而在2處截止。當遠端液控信號到達1時，閥芯移動，3流向2接通，而4處閉合。

◆ **SPECIFICATIONS** 規 格

| Model Number<br>型式號碼                 | Maximum Pressure<br>最大壓力 bar | Maximum Flow<br>最大流量 Lpm     | Weight<br>重量 Kg |
|--------------------------------------|------------------------------|------------------------------|-----------------|
| VEPO-10                              | 350 (5076 psi)               | 40 (10.57 gpm)               | 0.16 (0.35 lbs) |
| <b>Fluid Type</b> 液體型式               |                              | ISO VG 32,46,68              |                 |
| <b>Viscosity</b> 黏性 cSt              |                              | 10~400 (59~1854SSU)          |                 |
| <b>Operating Temperature</b> 操作溫度 °C |                              | -30~100 (-22~212°F)          |                 |
| <b>Contamination Level</b> 污染標準      |                              | ISO4406. 21/19/16 NAS1638,10 |                 |

◆ **HOW TO ORDER** 編號說明

|          |          |          |          |
|----------|----------|----------|----------|
| <b>1</b> | <b>2</b> | <b>3</b> | <b>4</b> |
| VEPO     | 10       | — 40     | — *      |

**1 VALVE SERIES** 系列名稱

VEPO= CARTRIDGE-STYLE, PILOT-OPERATED, HYDRAULIC DIRECTIONAL VALVE (DIRECT ACTING EXTERNAL PILOT INTERNAL DRAIN)

插入式液控方向閥(直動式外控內泄)

**2 SUBPLATE MOUNTING SIZE** 稱呼口徑

Size : 10

Cavity 孔口:CS10-4N

See Page Appendixes-A\_004

見附錄A\_004頁面

**3 ADJUSTMENT PRESSURE** 壓力調整範圍

| Order<br>編號 | Adjustment pressure<br>壓力調整範圍 |
|-------------|-------------------------------|
| <b>40</b>   | 4.0 bar ( 60 psi)             |
| <b>70</b>   | 7.5 bar (110 psi)             |
| <b>110</b>  | 11.7 bar (170 psi)            |

**4 SPOOL TYPE** 閥芯型式

Non: Standard

無記號：標準型

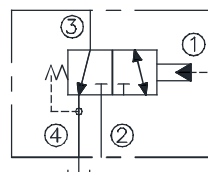
NS: With sealed spool

NS：密封閥芯

- 7.5 bar bias spring is the minimum required for use with sealed spool.

與密封閥芯配合使用時，所需最小彈簧預壓力為7.5bar。

◆ **CONTROL PORT(S)** 動作形式



◆ **DIMENSIONS** 外型尺寸圖

