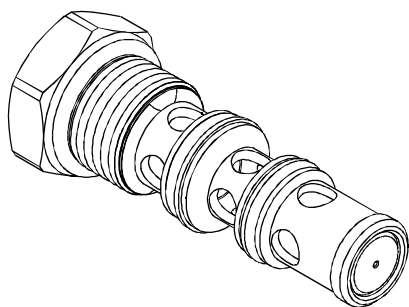


◆ **MODEL 型式**

VLSU-10

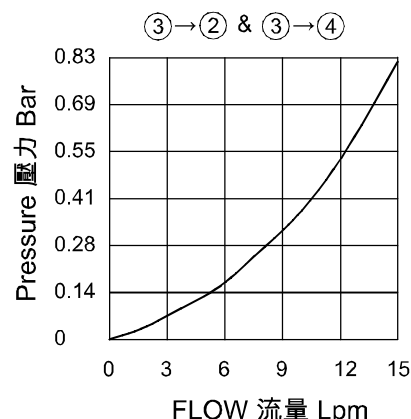


◆ **DESCRIPTION 說明**

Which can be used to help protect against brake or steering failure in the event of loss of pressure in either one of two accumulators. If one accumulator fails, the VLSU10 will shift over to protect the good one. All ports are connected in neutral. When pressure at one of the two load ports exceeds the other, the poppets shuttle to give priority flow and pressure to the port with the highest load. Typical applications include braking and steering circuits.

Note : Port 1 should be blocked.
當兩個儲能器其中一個出現失壓時,該閥可以用來防止出現制動或轉向故障。
當兩個儲能器其中一個出現失壓時,VLSU10將進行移動以保護正常的儲能器。
中位時,所有油口相互連接。當兩個負載油口其中之一的壓力超過另一個時,閥芯換位到壓力高的一側。典型應用包括制動和轉向油路。
注:油口1應被封閉。

◆ **PERFORMANCE 特性曲線**



◆ **SPECIFICATIONS 規格**

Model Number 型式號碼	Maximum Pressure 最大壓力 bar	Maximum Flow 最大流量 lpm	Weight 重量 Kg
VLSU-10	250 (3626psi)	15 (3.96 gpm)	0.20 (0.44 lbs)
Fluid Type 流體型式		ISO VG 32 , 46 , 68	
Viscosity 黏性 cSt		10~400 (59~1854 SSU)	
Operating Temperature 操作溫度 °C		-15~70 (-5~158°F)	
Contamination Level 污染標準		ISO4406. 21/19/16 NAS1638,10	

◆ **HOW TO ORDER 編號說明**

1	2
VLSU	10

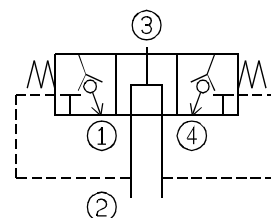
1 VALVE SERIES 系列名稱

VLSU=CARTRIDGE TYPE INVERTED SHUTTLE VALVES
插入式轉換梭閥

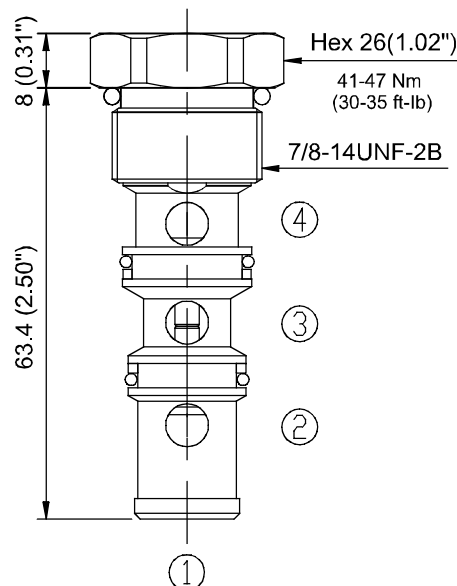
2 SUBPLATE MOUNTING SIZE 稱呼口徑

Size : 10
Cavity 孔口:CS10-4N
See Page Appendixes-A_004
見附錄 A_004 頁面

◆ **CONTROL PORT(S) 動作形式**



◆ **DIMENSIONS 外型尺寸圖**



◆ **TYPICAL APPLICATION 典型應用**

