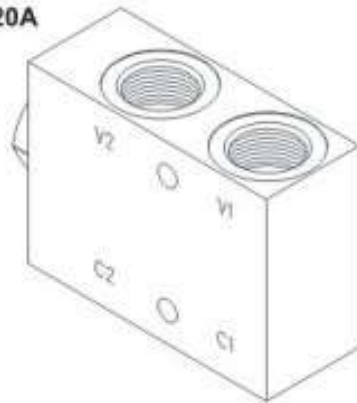


DIRECTIONAL VALVES 方向閥

VPC SERIES PILOT OPERATED CHECK VALVES VPC 系列引導式止逆閥

◆ MODEL 型 式

VPC-120A



◆ DESCRIPTION 說 明

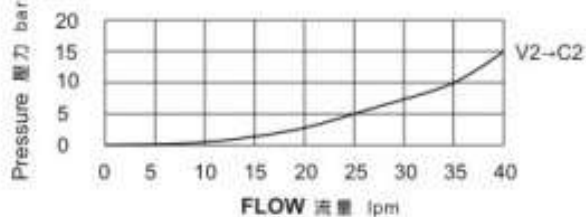
Pilot operated check valves are one kind of the hydraulic check valve, for using in blocking or load holding circuits.

引導式止逆閥，使用於鎖閉或保持負載油路的液壓止逆閥

◆ ALUMINUM VALVE 鋁合金閥體

◆ PERFORMANCE (Cartridge Only)

特性曲線



◆ SPECIFICATIONS 規 格

Model Number 型式號碼	Maximum Pressure 最大壓力 Bar	Pilot Ratio 引導比例	Rated Flow 額定流量 lpm	Weight 重量 Kg
VPC-120A	350 (5076psi)	6 : 1	40 (10.57gpm)	0.6 (1.32 lbs)
VPC-380A				0.63 (1.39 lbs)
Fluid Type 液體型式		ISO VG 32,46,68		
Viscosity 黏性 cSt		10~400 (59~1854SSU)		
Operating Temperature 操作溫度 °C		-15~70 (-5~158°F)		
Contamination Level 污染標準		ISO4406, 21/19/16 NAS1638,10		

◆ HOW TO ORDER 編號說明

1	2	3
VPC	120A	— *

1 VALVE SERIES 系列名稱

VPC = PILOT OPERATED CHECK VALVES
引導式止逆閥

2 PORT(S) 端口

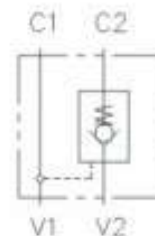
120A: 1/2
380A: 3/8

3 THREADED TYPE 螺紋規格

3G: PF(G) 4A: SAE 5B: BSP

◆ CONTROL PORT(S)

動作形式



◆ DIMENSIONS 外型尺寸圖

外型尺寸圖

