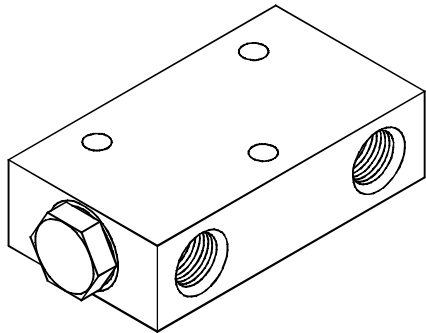


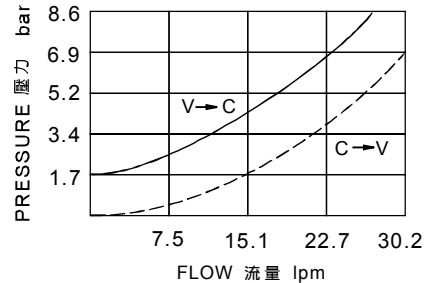
◆ **MODEL 型 式**
VPCL-08



◆ **DESCRIPTION 說明**

An in-line-housed, double-pilot-operated, hydraulic check valve for use in blocking or load holding circuits.
內鍵箱，雙重引導操作，使用於關閉或保持負載電路的液壓止逆閥。

◆ **PERFORMANCE 特性曲線**
(Cartridge Only)



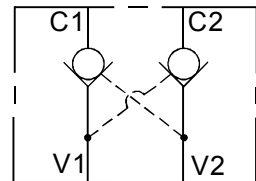
◆ **SPECIFICATIONS 規格**

Model Number 型式號碼	Operating Pressure 操作壓力 bar	Pilot Ratio 引導比例	Flow 流量 lpm	Weight 重量 Kg
VPCL-08	350 (5076 psi)	4:1 / 6:1	30 (7.93 gpm)	2.5 (5.51 lbs)
Fluid Type 流體型式			ISO VG 32, 46, 68	
Viscosity 黏性 cSt			10~400 (59~1854 SSU)	
Operating Temperature 操作溫度 °C			-15~70 (-5~158 °F)	
Contamination Level 污染標準			ISO4406. 21/19/16 NAS1638,10	

◆ **HOW TO ORDER 編號說明**



◆ **CONTROL PORT(S) 動作形式**



1 VALVE SERIES 系列名稱
VPCL = PILOT OPERATED CHECK VALVES
引導式止逆閥

4 PILOT RATIO 引導比例
4A = 4 : 1
6A = 6 : 1

2 PORTING 閥口 3/8

5 BIAS SPRING 開啓壓力

3 THREADED TYPE 螺紋規格
1P : PT 2N : NPT 3G : PF(G)
4A : SAE 5B : BSP

05 : 0.5 bar (7psi)
20 : 2 bar (29psi) (Standard 標準)
50 : 4 bar (58psi)

◆ **DIMENSIONS 外型尺寸圖**

