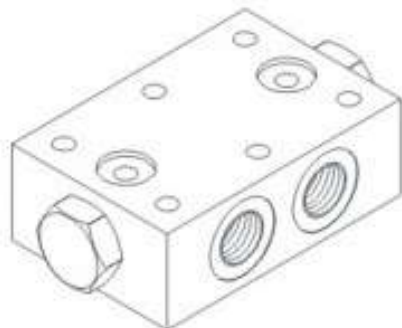


DIRECTIONAL VALVES 方向閥

VPCL SERIES PILOT OPERATED CHECK VALVES VPCL 系列引導式止逆閥

◆ MODEL 型式

VPCL-08AG



◆ DESCRIPTION 說明

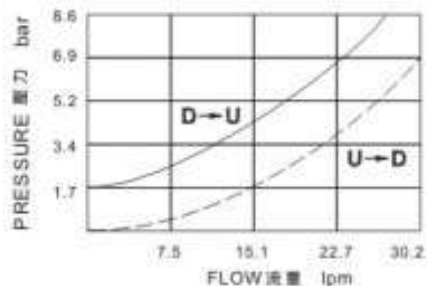
An in-line-housed, double-pilot-operated, hydraulic check valve for use in blocking or load holding circuits.

內線插、雙重引導操作，使用於關閉或保持負載電路的液壓止逆閥。

◆ ALUMINUM VALVE 鋁合金閥門

◆ PERFORMANCE 特性曲線

(Cartridge Only)



◆ SPECIFICATIONS 規格

Model Number 型式號碼	Maximum Pressure 最大壓力 bar	Pilot Ratio 引導比例	Maximum Flow 最大流量 Lpm	Weight 重量 Kg
VPCL-08AG	350 (5076psi)	4:1	30 (7.93 gpm)	0.60 (1.32 lbs)
Fluid Type 液體型式		ISO VG 32,46,68		
Viscosity 黏性 cSt		10~400 (59~1854SSU)		
Operating Temperature 操作溫度 °C		-15~70 (-5~158°F)		
Contamination Level 污染標準		ISO4406. 21/19/16 NAS1638,10		

◆ HOW TO ORDER 編裝說明

1	2	3
VPCL	08AG	— *

1 VALVE SERIES 系列名稱

VPCL = PILOT OPERATED CHECK VALVES
引導式止逆閥

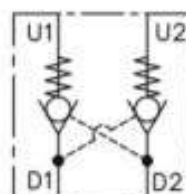
2 PORTING 端口

3/8 AG
G: TYPE: BASEPLATE MOUNTING TYPE
G: (板式連接)

3 THREADED TYPE 螺紋規格

1P: PT 2N: NPT 3G: PF(G)
4A: SAE 5B: BSP

◆ CONTROL PORT(S) 動作形式



◆ DIMENSIONS 外型尺寸圖

