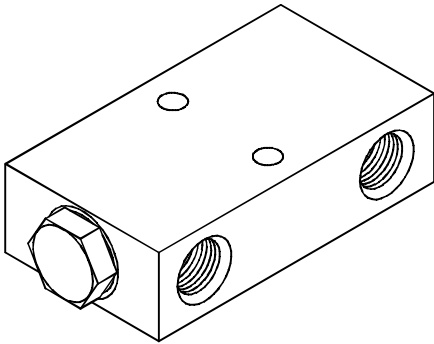


◆ MODEL 型 式

VPCL-10



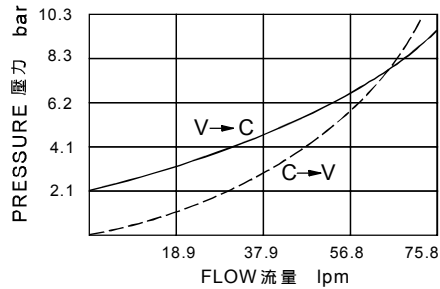
◆ DESCRIPTION 說 明

An in-line-housed, double-pilot-operated, hydraulic check valve for use in blocking or load holding circuits.

內線箱，雙重引導操作，使用於關閉或保持負載電路的液壓止逆閥。

◆ PERFORMANCE 特性曲線

(Cartridge Only)



◆ SPECIFICATIONS 規 格

Model Number 型式號碼	Operating Pressure 操作壓力 bar	Pilot Ratio 引導比例	Flow 流量 lpm	Weight 重量 Kg
VPCL-10	350 (5076 psi)	4:1	75 (19.81 gpm)	3.0 (6.61 lbs)
Fluid Type 流體型式			ISO VG 32, 46, 68	
Viscosity 黏性 cSt			10~400 (59~1854 SSU)	
Operating Temperature 操作溫度 °C			-15~70 (-5~158°F)	
Contamination Level 污染標準			ISO4406. 21/19/16 NAS1638,10	

◆ HOW TO ORDER 編號說明

1	2	3
VPCL	10	— *

1 VALVE SERIES 系列名稱

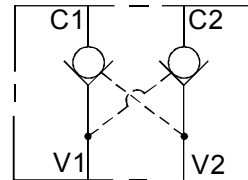
VPCL = PILOT OPERATED CHECK VALVES
引導式止逆閥

2 PORTING 閥口 1/2

3 THREADED TYPE 螺紋規格

1P: PT 2N: NPT 3G: PF(G)
4A: SAE 5B: BSP

◆ CONTROL PORT(S) 動作形式



◆ DIMENSIONS 外型尺寸圖

外型尺寸圖

