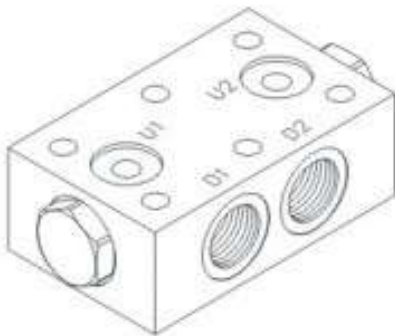


DIRECTIONAL VALVES 方向閥

VPCL SERIES PILOT OPERATED CHECK VALVES VPCL 系列引導式止逆閥

◆ MODEL 型式

VPCL-10AG



◆ DESCRIPTION 說明

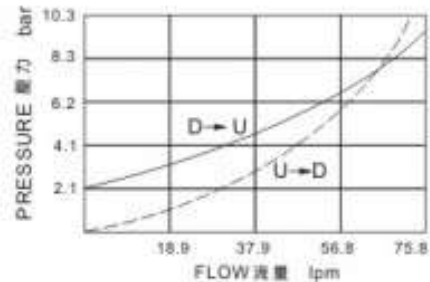
An in-line-housed, double-pilot-operated, hydraulic check valve for use in blocking or load holding circuits.

內線閥，雙重引導操作，使用於鎖閉或保持負載電路的液壓止逆閥。

◆ ALUMINUM VALVE 鋁合金閥門

◆ PERFORMANCE 特性曲線

(Cartridge Only)



◆ SPECIFICATIONS 規格

Model Number 型式號碼	Operating Pressure 操作壓力 bar	Pilot Ratio 引導比例	Flow 流量 lpm	Weight 重量 Kg
VPCL-10AG	350 (5076 psi)	4:1	75 (19.81 gpm)	0.83 (1.83 lbs)
Fluid Type 液體型式			ISO VG 32, 46, 68	
Viscosity 黏性 cSt			10~400 (59~1854 SSU)	
Operating Temperature 操作溫度 °C			-15~70 (-5~158° F)	
Contamination Level 污染標準			ISO4406, 21/19/16 NAS1638,10	

◆ HOW TO ORDER 編號說明

1	2	3
VPCL	10AG	— *

1 VALVE SERIES 系列名稱

VPCL = PILOT OPERATED CHECK VALVES
引導式止逆閥

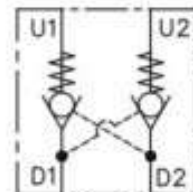
3 THREADED TYPE 螺紋規格

1P: PT 2N: NPT 3G: PF(G)
4A: SAE 5B: BSP

2 PORTING 接口

10AG: G1/2
G: TYPE: BASEPLATE MOUNTING TYPE
G: (板式連接)

◆ CONTROL PORT(S) 動作形式



◆ DIMENSIONS 外型尺寸圖

