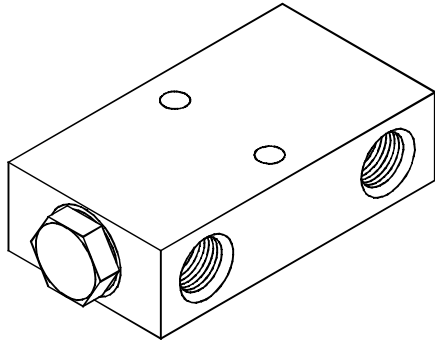


◆ **MODEL 型式**
VPCL-12

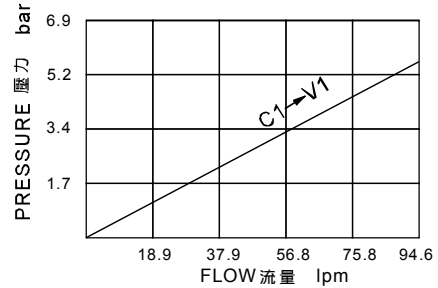


◆ **DESCRIPTION 說明**

An in-line-housed, double-pilot-operated, hydraulic check valve for use in blocking or load holding circuits.

內鍵箱，雙重引導操作，使用於關閉或保持負載電路的液壓止逆閥。

◆ **PERFORMANCE 特性曲線**
(Cartridge Only)



◆ **SPECIFICATIONS 規格**

Model Number 型式號碼	Operating Pressure 操作壓力 bar	Pilot Ratio 引導比例	Flow 流量 lpm	Weight 重量 Kg
VPCL-12	350 (5076 psi)	4:1	95 (25.10 gpm)	7.5 (16.53 lbs)
Fluid Type 流體型式			ISO VG 32, 46, 68	
Viscosity 黏性 cSt			10~400 (59~1854 SSU)	
Operating Temperature 操作溫度 °C			-15~70 (-5~158 °F)	
Contamination Level 污染標準			ISO4406. 21/19/16 NAS1638,10	

◆ **HOW TO ORDER 編號說明**

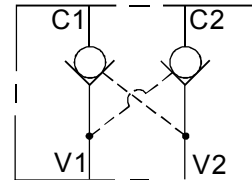
1	2	3
VPCL	12	— *

1 VALVE SERIES 系列名稱
VPCL = PILOT OPERATED CHECK VALVES
引導式止逆閥

2 PORTING 閥口 3/4

3 THREADED TYPE 螺紋規格
1P: PT 2N: NPT 3G: PF(G)
4A: SAE 5B: BSP

◆ **CONTROL PORT(S) 動作形式**



◆ **DIMENSIONS 外型尺寸圖**

