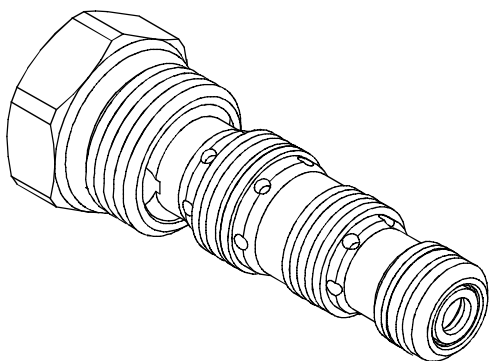
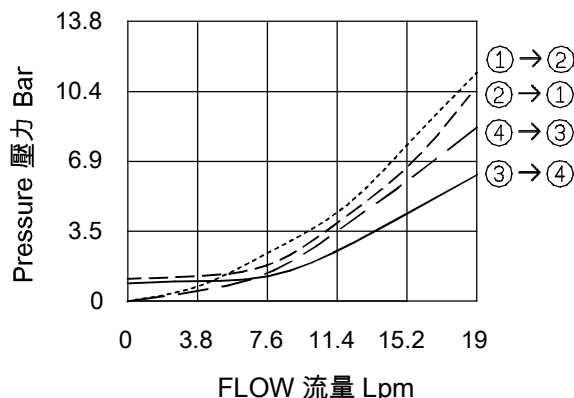


◆ **MODEL 型式**

VPW-08



◆ **PERFORMANCE 特性曲線**



◆ **SPECIFICATIONS 規格**

Model Number 型式號碼	Maximum Pressure 最大壓力 bar	Cracking Pressure 開啟壓力 bar	Pilot Ratio 引導比例	Maximum Flow 最大流量 lpm	Weight 重量 Kg
VPW-08	240 (3481psi)	1.7 (25 psi)	3:1 / 7:1	19 (5.02 gpm)	0.1 (0.22 lbs)
<b>Fluid Type</b> 流體型式			ISO VG 32, 46, 68		
<b>Viscosity</b> 黏性 cSt			10~400 (59~1854 SSU)		
<b>Operating Temperature</b> 操作溫度 °C			-30~100 (-22~212°F)		
<b>Contamination Level</b> 污染標準			ISO4406. 20/18/15 NAS1638. 9		

◆ **HOW TO ORDER 編號說明**

<b>1</b>	<b>2</b>	<b>3</b>	<b>4</b>
VPW	08	3A	*

**1 VALVE SERIES** 系列名稱

VPW= Cartridge Pilot Operated Check Valves  
插入式引導止逆閥

**2 SUBPLATE MOUNTING SIZE** 稱呼口徑

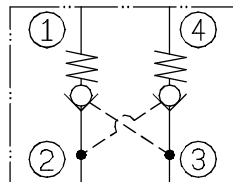
Size : 08  
Cavity 孔口: CS08-4N  
See Appendixes-A 見附錄A  
For Manifold See Appendixes-B 油路板見附錄B

**3 PILOT RATIO** 引導比例

3A : 3:1  
7A : 7:1

**4 DESIGN NO** 設計編號

◆ **CONTROL PORT(S) 動作形式**



◆ **DIMENSIONS 外型尺寸圖**

