

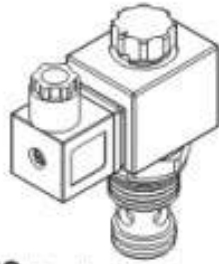
SOLENOID OPERATED CARTRIDGE VALVES

插入式電磁閥

VSE SERIES CARTRIDGE TYPE SOLENOID OPERATED CHECK VALVES (SPEED) VSE 系列插入式電磁截止閥(快速型)

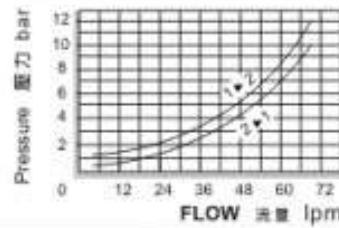
◆ MODEL 型式

VSE10-28S



◆ PERFORMANCE 特性曲線

Pressure Drop 壓力降



◆ SPECIFICATIONS 規格

Model Number 型式號碼	Maximum Pressure 最大壓力 bar	Maximum Flow 最大流量 lpm	Weight 重量 Kg
VSE10-28S	350 (5076psi)	70 (18.49gpm)	0.55 (1.21 lbs)
Fluid Type 液體型式		ISO VG 32, 46, 68	
Viscosity 黏性 cSt		10-400 (59-1854 SSU)	
Operating Temperature 操作溫度 °C		-15-70 (-5-158° F)	
Contamination Level 污染標準		ISO4406, 21/19/16 NAS1638,10	

◆ HOW TO ORDER 編號說明

1	2	3	4	5	6
VSE	10	—	28S	—	A2 — X — Y

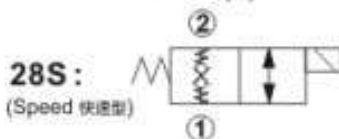
1 VALVE SERIES 系列名稱

VSE=Cartridge Type Solenoid Operated Check Valves (speed)
插入式電磁截止閥 (快速型)

2 SUBPLATE MOUNTING SIZE 插板口徑

10 : E-017
Cavity 孔口: CSE 017-2N
See Page Appendixes-A_001
見附錄A_001 頁面

3 CONTROL PORT(S) 動作形式



4 TYPE OF COIL 線圈類型

Non: Without Coil 無配線線圈
A1 : RAC110V 60/50HZ D1 : DC12V
A2 : RAC220V 60/50HZ D2 : DC24V

5 WIRING TYPE 接線型式

Non: WIRING BOX TYPE (DIN) X : DOUBLE LEAD
無接線盒式 (DIN) 雙接線方式



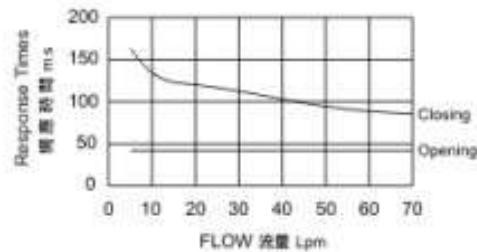
× For more technical information of wiring type, please refer to the appendixes-D or contact with us.
接線型式的詳細技術資料請查附錄-D或與我們聯繫。

6 ADJUSTMENT OPTION 調整選擇

Non	Y
Non-Standard 無配線 - 標準型	Y: Twist Style Manual Override 旋裝型 - 手動操作選位

◆ TECHNICAL DATA 技術數據

The only difference between this valve and the standard model is a spring placed between pilot section and poppet. 該閥與標準閥的惟一區別是在先導部份和提動閥之間的彈簧。
This design allows faster response times with very small flow or even virtually zero flow. 這樣的設計在低流量甚至零流量時實現更快的響應時間。
A pressure of approximately 4 bar (58 psi) is required to open the main poppet. 主閥的開啟壓力約為 4 bar (58 psi).



◆ DIMENSIONS 外型尺寸圖

