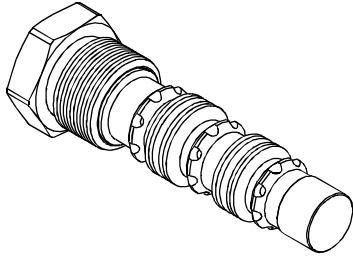


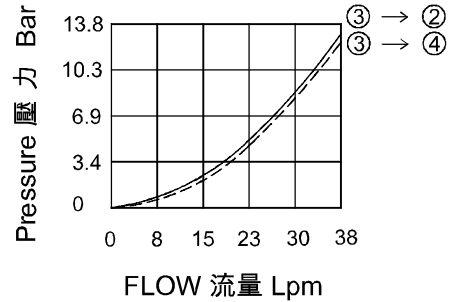
◆ **MODEL 型式**
VSH-10



◆ **DESCRIPTION 說明**

A spool-type, closed in transition, 2-position, 3-way hot oil shuttle valve, which may be used on hydrostatic transmissions to direct charge pump oil to a heat exchanger or to tank. With internal piloting at port ①, ② or ③, the valve will direct oil from the port opposite of the piloted port to port ④, thus removing oil from the low-pressure side for cooling or filtration purposes. The valve is springless, shifting to other side, rely on solely the internal pilot pressure signal, and is closed in transition. 滑閥型二位三通(切換時閉合)熱油梭閥,用於靜壓傳動,將補償泵油液傳輸到熱交換器或油箱。利用油口①、②或③處的內控壓力信號,閥將油從與內控油口相反的油口流到油口④,從而排出低壓端的油液,以達到冷卻或過濾目的。該閥沒有彈簧,完全依靠內控壓力信號將閥芯移動到另一端,並且在切換時閉合。

◆ **PERFORMANCE 特性曲線**



◆ **SPECIFICATIONS 規格**

Model Number 型式號碼	Operating Pressure 操作壓力 bar	Flow 流量 lpm	Weight 重量 Kg
VSH-10	350 (5076 psi)	38 (10.04 gpm)	0.13 (0.29 lbs)
Fluid Type 流體型式		ISO VG 32, 46, 68	
Viscosity 黏性 cSt		10~400 (59~1854 SSU)	
Operating Temperature 操作溫度 °C		-15~70 (-5~158° F)	
Contamination Level 污染標準		ISO4406. 21/19/16 NAS1638,10	

◆ **HOW TO ORDER 編號說明**

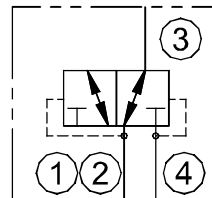
1	2	3
VSH	10	*

1 VALVE SERIES 系列名稱
VSH = CARTRIDGE HOT OIL SHUTTLE VALVES
插入式熱油梭閥

2 SUBPLATE MOUNTING SIZE 稱呼口徑
Size : 10
Cavity 孔口:CS10-4N
See Page Appendixes-A_004
見附錄A_004 頁面

3 DESIGN NO 設計編號

◆ **CONTROL PORT(S) 動作形式**



◆ **DIMENSIONS 外型尺寸圖**

