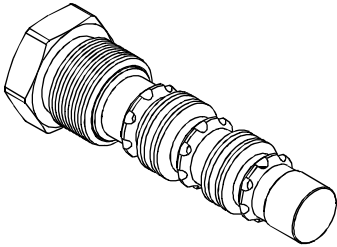


DIRECTIONAL VALVES 方向閥

VSHL SERIES CARTRIDGE LOW SIDE HOT OIL SHUTTLE VALVES VSHL系列插入式低壓側熱油梭閥

◆ MODEL 型式 VSHL-10

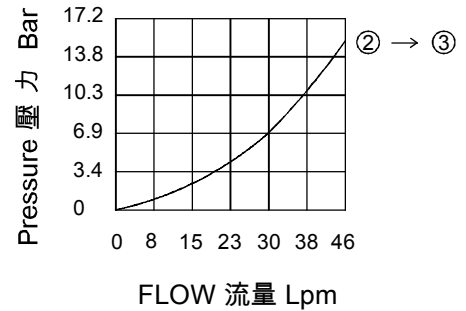


◆ DESCRIPTION 說明

A spool-type, closed in neutral, spring centered, 2-position, 3-way hot oil shuttle valve, which may be used on hydrostatic transmissions to direct charge pump oil to a heat exchanger or to tank. With internal piloting at port ①, ② or ④, the valve will direct oil from the port opposite of the piloted port to port ③, thus removing oil from the low-pressure side for cooling or filtration purposes. The valve has a spring-centered spool, and is closed in neutral position.

滑閥型二位三通(中位閉合、彈簧對中)熱油梭閥,用於靜壓傳動,將補償泵油液傳輸到熱交換器或油箱.利用油口 ①、② 或 ④ 處的內控壓力信號,閥將油從與內控油口相反的油口流到油口③,從而排出低壓端的油液,以達到冷卻或過濾目的.該閥帶有彈簧對中閥芯,並且在中位閉合.

◆ PERFORMANCE 特性曲線



◆ SPECIFICATIONS 規格

Model Number 型式號碼	Operating Pressure 操作壓力 bar	Bias Spring 開啓壓力 bar	Flow 流量 lpm	Weight 重量 Kg
VSHL-10	350 (5076 psi)	4.1 (59 psi)	46 (12.15gpm)	0.13 (0.29 lbs)
Fluid Type 流體型式		ISO VG 32, 46, 68		
Viscosity 黏性 cSt		10~400 (59~1854 SSU)		
Operating Temperature 操作溫度 °C		-30~100 (-22~212°F)		
Contamination Level 污染標準		ISO4406. 21/19/16 NAS1638,10		

◆ HOW TO ORDER 編號說明

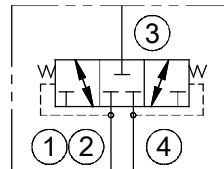
1	2	3
VSHL	10	*

1 VALVE SERIES 系列名稱

VSHL = CARTRIDGE LOW SIDE HOT OIL SHUTTLE VALVES

插入式低壓側熱油梭閥

◆ CONTROL PORT(S) 動作形式



2 SUBPLATE MOUNTING SIZE 稱呼口徑

Size : 10
Cavity 孔口:CS10-4N
See Page Appendixes-A_004
見附錄A_004 頁面

3 SEALS 密封件

Non : NBR (Standard) 無記號 : 丁腈橡膠(標準型)
HN : HNBR HN : 氯化丁腈橡膠
V : VITON V : 氟橡膠

◆ DIMENSIONS 外型尺寸圖

