

# SOLENOID OPERATED CARTRIDGE VALVES

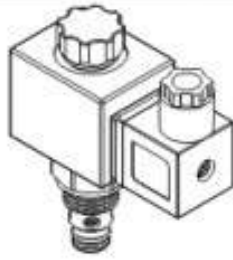
插入式電磁閥

## VSM SERIES CARTRIDGE TYPE SOLENOID OPERATED CHECK VALVES (SPEED)

VSM 系列插入式電磁止逆閥(快速型)

### ◆ MODEL 型 式

VSM08-20S



### ◆ TECHNICAL DATA 技術數據

The only difference between this valve and the standard model is a spring placed between pilot section and poppet. 該閥與標準閥的唯一區別是在先導部份和提動閥之間的彈簧。  
This design allows faster response times with very small flow or even virtually zero flow. 這樣的設計在低流量甚至零流量時實現更快的響應時間。  
A pressure of approximately 5 bar (73 psi) is required to open the main poppet. 主閥的開啟壓力約為 5 bar (73 psi).

### ◆ SPECIFICATIONS 規 格

Model Number 型式號碼	Maximum Pressure 最大壓力 bar	Maximum Flow 最大流量 lpm	Weight 重量 Kg
VSM08-20S	350 (5076psi)	40 (10.57gpm)	0.45 (0.99 lbs)
Fluid Type 液體型式		ISO VG 32, 46, 68	
Viscosity 黏性 cSt		10-400 (59-1854 SSU)	
Operating Temperature 操作溫度 °C		-15~70 (-5~158 °F)	
Contamination Level 污染標準		ISO4406. 21/19/16 NAS1638,10	

### ◆ HOW TO ORDER 編號說明

1	2	3	4	5	6
VSM	08	— 20S	— A2	— X	— Y

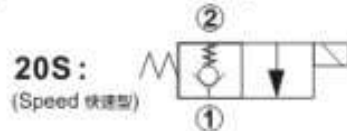
#### 1 VALVE SERIES 系列名稱

VSM= Cartridge Type Solenoid Operated Check Valves (Speed)  
插入式電磁止逆閥(快速型)

#### 2 SUBPLATE MOUNTING SIZE 稱呼口徑

Size:08  
Cavity 孔口: 06020  
See Page Appendixes-A\_001  
見附錄A\_001 頁面

#### 3 CONTROL PORT(S) 動作形式



#### 4 TYPE OF COIL 線圈類型

Non: Without Coil 無記號·無線圈  
A1 : RAC110V 60/50HZ D1 : DC12V  
A2 : RAC220V 60/50HZ D2 : DC24V

#### 5 WIRING TYPE 接線型式

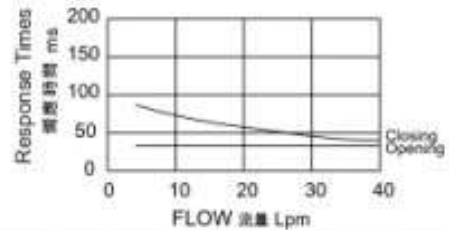
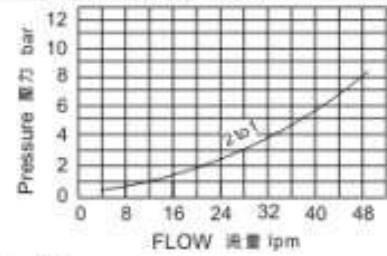
Non: WIRING BOX TYPE (DIN) X: DOUBLE LEAD  
無接線盒式 (DIN) 雙接線方式



※ For more technical information of wiring type please refer to the appendixes-D or contact with us.  
接線型式的詳細技術資料請查附錄-D或與我們聯繫。

### ◆ PERFORMANCE 特性曲線

#### Pressure Drop 壓力降



#### 6 ADJUSTMENT OPTION 調整選擇

Non	
Non-Standard 無記號·標準型	
Y	
Y: Twist Style Manual Override 旋壓型-手動操作選位	

### ◆ DIMENSIONS 外型尺寸圖

