

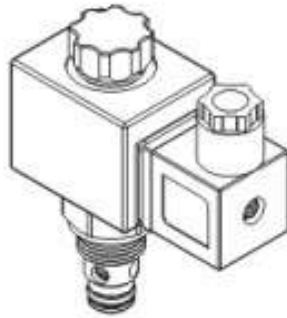
SOLENOID OPERATED CARTRIDGE VALVES

插入式電磁閥

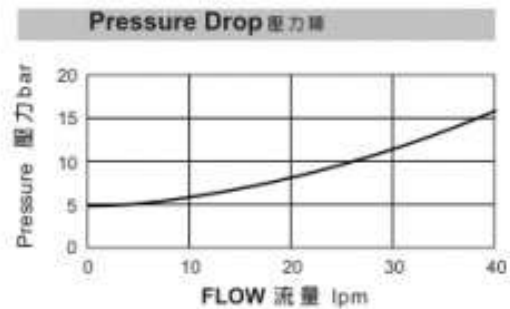
VSM SERIES CARTRIDGE TYPE SOLENOID OPERATED CHECK VALVES

VSM 系列插入式電磁截止閥

◆ MODEL 型 式 VSM08-28



◆ PERFORMANCE 特性曲線



◆ SPECIFICATIONS 規 格

Model Number 型號號碼	Maximum Pressure 最大壓力 bar	Maximum Flow 最大流量 lpm	Weight 重量 Kg
VSM08-28	350 (5076 psi)	40 (10.57 gpm)	0.45 (0.99 lbs)
Fluid Type 液體型式		ISO VG 32, 46, 68	
Viscosity 黏性 cSt		10~400 (59~1854 SSU)	
Operating Temperature 操作溫度 °C		-15~70 (-5~158 °F)	
Contamination Level 污染標準		ISO4406. 21/19/16 NAS1638,10	

◆ HOW TO ORDER 編號說明

1	2	3	4	5	6
VSM	08	— 28 —	A2	— X —	Y

1 VALVE SERIES 系列名稱

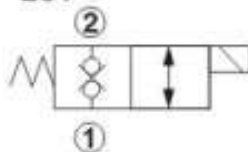
VSM= Cartridge Type Solenoid Operated Check Valves 插入式電磁截止閥

2 SUBPLATE MOUNTING SIZE 稱呼口徑

Size:08
Cavity 孔口: 06020
See Page Appendixes-A_001
見附錄A_001 頁面

3 CONTROL PORT(S) 動作形式

28:



4 TYPE OF COIL 線圈類型

Non: Without Coil 無配線/無線圈
A1: RAC110V 60/50HZ D1: DC12V
A2: RAC220V 60/50HZ D2: DC24V

5 WIRING TYPE 接線型式

Non: WIRING BOX TYPE (DIN) 無接線盒式 (DIN) X: DOUBLE LEAD 雙接線方式



※ For more technical information of wiring type please refer to the appendixes-D or contact with us.
接線型式的詳細技術資料請查附錄-D或與我們聯繫。

6 ADJUSTMENT OPTION 調整選擇

Non Non: Standard 無配線、標準型	
Y Y: Twist Style Manual Override 旋緊型— 手動操作選位	

◆ DIMENSIONS 外型尺寸圖

