

SOLENOID OPERATED CARTRIDGE VALVES

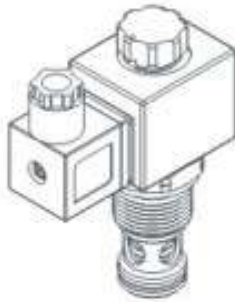
插入式電磁閥

VSM SERIES CARTRIDGE TYPE SOLENOID OPERATED CHECK VALVES

VSM 系列插入式電磁止逆閥

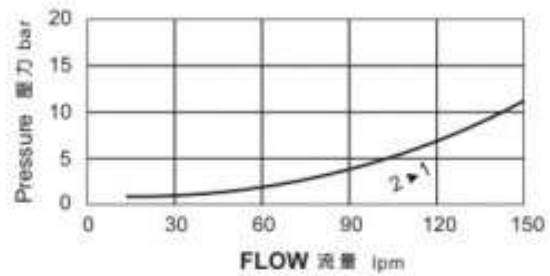
◆ MODEL 型式

VSM12-20



◆ PERFORMANCE 特性曲線

Pressure Drop 壓力降



◆ SPECIFICATIONS 規格

Model Number 型式號碼	Maximum Pressure 最大壓力 bar	Maximum Flow 最大流量 lpm	Weight 重量 Kg
VSM12-20	350 (5076 psi)	150 (39.63 gpm)	0.55 (1.21 lbs)
Fluid Type 液體型式		ISO VG 32, 46, 68	
Viscosity 黏性 cSt		10-400 (59-1854 SSU)	
Operating Temperature 操作溫度 °C		-15~70 (-5~158 °F)	
Contamination Level 污染標準		ISO4406, 21/19/16 NAS1638,10	

◆ HOW TO ORDER 編號說明

1	2	3	4	5	6
VSM	12	—	20	—	A2 — X — Y

1 VALVE SERIES 系列名稱

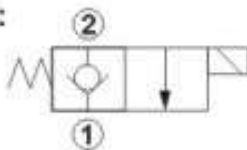
VSM=Cartridge Type Solenoid Operated Check Valves 插入式電磁止逆閥

2 SUBPLATE MOUNTING SIZE 插片口徑

Size: 12
Cavity 孔口: 12120 (metric size 公制尺寸)

3 CONTROL PORT(S) 動作形式

20:



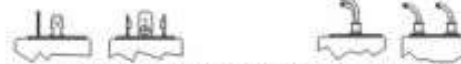
4 TYPE OF COIL 線圈類型

Non: Without Coil 無配裝線圈

A1: RAC110V 60/50HZ D1: DC12V
A2: RAC220V 60/50HZ D2: DC24V

5 WIRING TYPE 接線型式

Non: WIRING BOX TYPE (DIN) 無接線盒式 (DIN) X: DOUBLE LEAD 雙接線方式

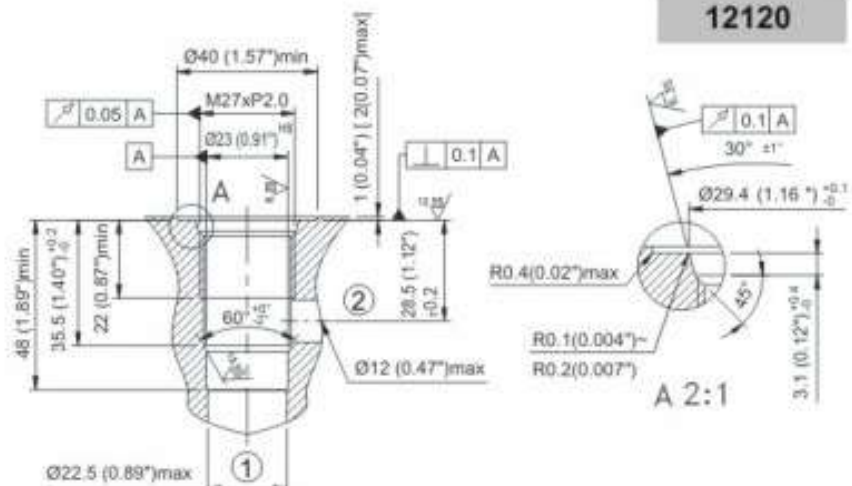
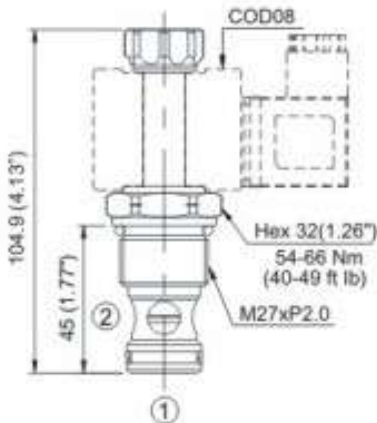


※ For more technical information of wiring type please refer to the appendix-D or contact with us. 接線型式的詳細技術資料請查附錄-D或與我們聯繫。

6 ADJUSTMENT OPTION 調整選擇

Non Non-Standard 無配裝：標準型		Y Y: Twist Style Manual Override 旋緊型— 手動操作復位	
--------------------------------	--	---	--

◆ DIMENSIONS 外型尺寸圖



12120