

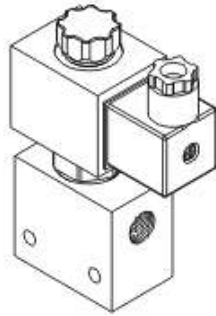
# Cartridge Type Solenoid Operated Check Valves

VSV08

插入式電磁止逆閥

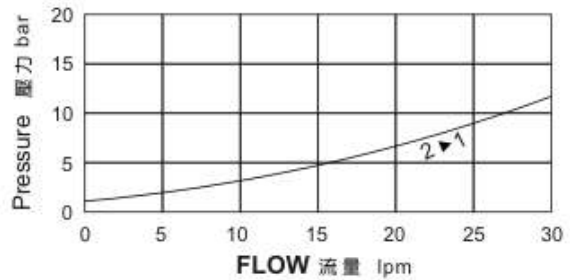
## MODEL 型 式

VSV08-20



## PERFORMANCE 特性曲線

### Pressure Drop 壓力降



## SPECIFICATIONS 規 格

Model Number 型式號碼	Maximum Pressure 最大壓力 bar	Maximum Flow 最大流量 lpm	Weight 重量 Kg
VSV08-20	210 (3046psi)	30 (7.92gpm)	0.65 (1.43 lbs)
VSV08-205	350 (5076psi)	40 (10.56gpm)	
Fluid Type 流體型式		ISO VG 32, 46, 68	
Viscosity 黏性 cSt		10~400 (59~1854 SSU)	
Operating Temperature 操作溫度 °C		-15~70 (-5~158°F)	
Contamination Level 污染標準		ISO4406. 21/19/16 NAS1638,10	

Note: The maximum allowable pressure for the standard aluminum-alloy valves is 250 bar; we also supply the nodular ductile-iron and steel valves; contact our factory for details  
註:標準閥塊鋁合金最大壓力250bar, 另提供球墨鑄鐵及鋼製閥塊,請聯繫工廠。

## HOW TO ORDER 編號說明

<b>1</b>	<b>2</b>	<b>3</b>	<b>4</b>	<b>5</b>	<b>6</b>	<b>7</b>	<b>8</b>
VSV	08	—	20	—	A2	—	X
							Y
							*
							*

## 5 WIRING TYPE 接線型式

Non: WIRING BOX TYPE (DIN) X: DOUBLE LEAD  
無: 接線盒式 (DIN) X: 雙接線方式



※ For more technical information of wiring type please refer to the appendixes-D or contact with us.  
接線型式的詳細技術資料請查附錄-D或與我們聯繫。

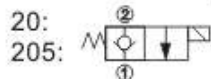
## 1 VALVE SERIES 系列名稱

VSV=Cartridge Type Solenoid Operated Check Valves 插入式電磁止逆閥

## 2 SUBPLATE MOUNTING SIZE 稱呼口徑

Size:08 Cavity 孔口:CS08-2N

## 3 CONTROL PORT(S) 動作形式



## 4 TYPE OF COIL 線圈類型

Non: Without Coil 無配號:無線圈

A1: RAC110V 60/50HZ D1: DC12V  
A2: RAC220V 60/50HZ D2: DC24V

## 6 ADJUSTMENT OPTION 調整選擇

Non	
Non:Standard 無配號:標準型	
Y	
Y:Twist Style Manual Override 旋緊型- 手動操作復位	

## 7 THREADED TYPE 螺紋規格

1P: PT 3G: PF(G)  
2N: NPT 4A: SAE  
5B: BSP

## 8 PORTS DIMENSIONS 接口尺寸

A: 1/4 B: 3/8

## DIMENSIONS 外形尺寸圖

外形尺寸圖

