

# SOLENOID OPERATED CARTRIDGE VALVES

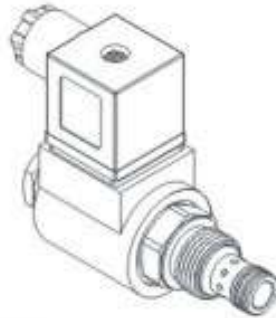
插入式電磁閥

## VSV SERIES CARTRIDGE TYPE SOLENOID OPERATED CHECK VALVES

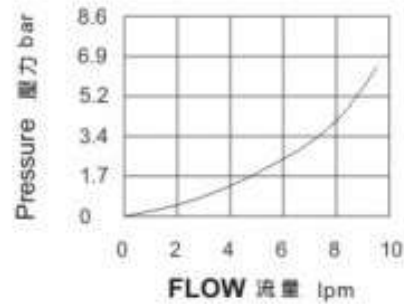
vsv 系列插入式電磁止逆閥

### ◆ MODEL 型 式

VSV08H-25



### ◆ PERFORMANCE 特性曲線



### ◆ SPECIFICATIONS 規 格

Model Number 型式號碼	Maximum Pressure 最大壓力 bar	Operating Pressure 操作壓力 bar	Maximum Flow 最大流量 lpm	Weight 重量 Kg
VSVH08-25	250 (3626 psi)	210 (3046 psi)	9.5 (2.51 gpm)	0.45 (0.99 lbs)
Fluid Type 液體型式		ISO VG 32, 46, 68		
Viscosity 黏性 cSt		10~400 (59~1854 SSU)		
Operating Temperature 操作溫度 °C		-15~70 (-5~158°F)		
Contamination Level 污染標準		ISO4406. 21/19/16 NAS1638,10		

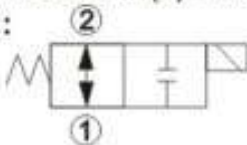
### ◆ HOW TO ORDER 編號說明

1	2	3	4	5	6
VSV	08H	— 25 —	A2	— X —	*

**1 VALVE SERIES 系列名稱**  
VSV=Cartridge Type Solenoid Operated Check Valves 插入式電磁止逆閥

**2 SUBPLATE MOUNTING SIZE 機匣口徑**  
Size:08  
Cavity 孔口: CS08-2N  
See Page Appendixes-A\_001  
見附錄A\_001頁面

**3 CONTROL PORT(S) 動作形式**  
25:



**4 TYPE OF COIL 線圈類型**  
Non: Without Coil 無配裝/無線圈  
A1 : RAC110V 60/50HZ D1 : DC12V  
A2 : RAC220V 60/50HZ D2 : DC24V  
※ High power application please refer to COB08 or COD08.  
用於高功率時請參考COB08或COD08。

**5 WIRING TYPE 接線型式**  
Non: WIRING BOX TYPE (DIN) X: DOUBLE LEAD 雙接線方式



※ For more technical information of wiring type please refer to the appendixes-D or contact with us.  
接線型式的詳細技術資料請查附錄-D或與我們聯繫。

**6 ADJUSTMENT OPTION 調整選擇**



### ◆ DIMENSIONS 外型尺寸圖

