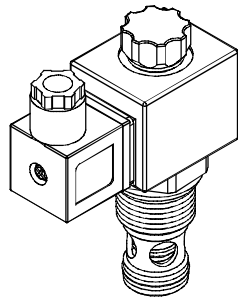
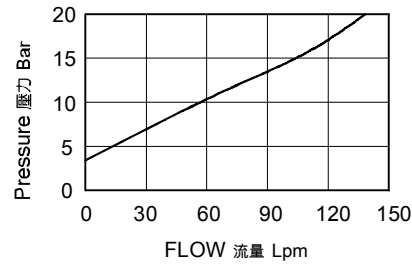


◆ MODEL 型式

VSV12-22S



◆ PERFORMANCE 特性曲線



◆ SPECIFICATIONS 規格

| Model Number 型式號碼 | Maximum Pressure 最大壓力 bar | Maximum Flow 最大流量 lpm | Weight 重量 Kg |
|-------------------------------|---------------------------|------------------------------|-----------------|
| VSV12-22S | 350 (5076psi) | 150 (39.63gpm) | 0.55 (1.21 lbs) |
| Fluid Type 流體型式 | | ISO VG 32, 46, 68 | |
| Viscosity 黏性 cSt | | 10~400 (59~1854 SSU) | |
| Operating Temperature 操作溫度 °C | | -30~100 (-22~212°F) | |
| Contamination Level 污染標準 | | ISO4406. 21/19/16 NAS1638,10 | |

◆ HOW TO ORDER 編號說明

| | | | | | |
|----------|----------|----------|----------|----------|----------|
| 1 | 2 | 3 | 4 | 5 | 6 |
| VSV | 12 | — 22S — | A2 | — X — | Y |

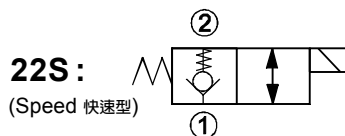
1 VALVE SERIES 系列名稱

VSV=Cartridge Type Solenoid Operated Check Valves (speed)
插入式電磁止逆閥(快速型)

2 SUBPLATE MOUNTING SIZE 稱呼口徑

Size : 12
Cavity 孔口:CS12-2N
See Page Appendixes-A_001
見附錄A_001 頁面

3 CONTROL PORT(S) 動作形式



4 TYPE OF COIL 線圈類型

Non: Without Coil 無記號:無線圈
A1 : RAC110V 60/50HZ D1 : DC12V
A2 : RAC220V 60/50HZ D2 : DC24V

5 WIRING TYPE 接線型式

Non: WIRING BOX TYPE(DIN) X: DOUBLE LEAD
無:接線盒式(DIN) 雙接線方式



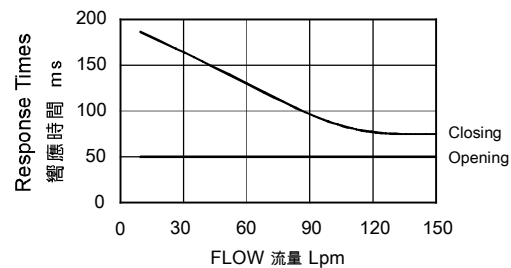
※ For more technical information of wiring type please refer to the appendixes-D or contact with us.
接線型式的詳細技術資料請查附錄-D或與我們聯繫。

6 ADJUSTMENT OPTION 調整選擇

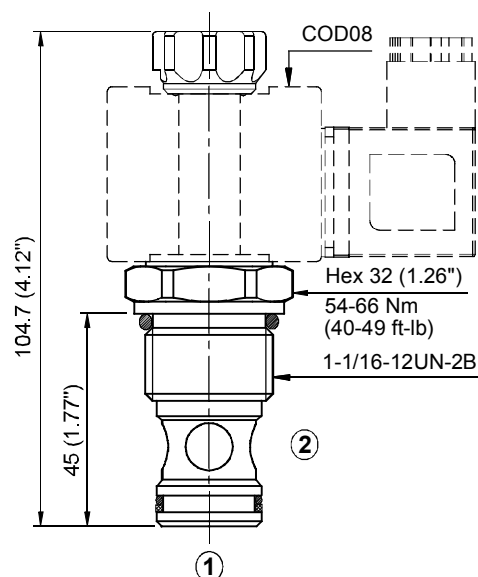
| | | | |
|---------------------------|--|--|--|
| Non | | Y | |
| Non: Standard 無記號: 標準型 | | Y: Twist Style Manual Override 旋緊型 - 手動操作復位 | |

◆ TECHNICAL DATA 技術數據

The only difference between this valve and the standard model is a spring placed between pilot section and poppet. 該閥與標準閥的唯一區別是在先導部份和提動閥之間的彈簧。
This design allows faster response times with very small flow or even virtually zero flow. 這樣的設計在低流量甚至零流量時實現更快的響應時間。
A pressure of approximately 3 bar (43.5 psi) is required to open the main poppet. 主閥的開啓壓力約為 3 bar (43.5 psi).



◆ DIMENSIONS 外型尺寸圖



A
088

VSV