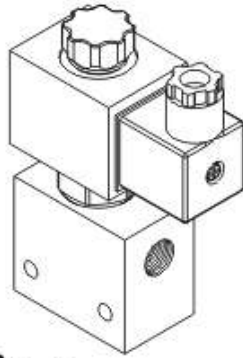


Cartridge Type Solenoid Operated Check Valves

VSV12

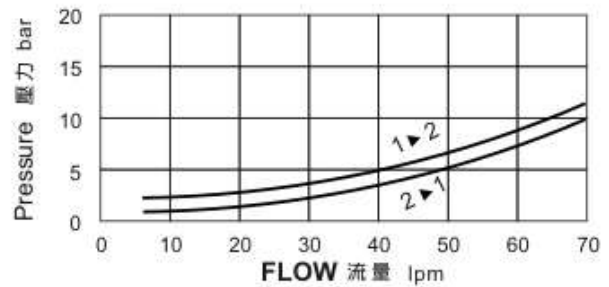
插入式電磁止逆閥

◆ MODEL 型 式 VSV12-23



◆ PERFORMANCE 特性曲線

Pressure Drop 壓力降



◆ SPECIFICATIONS 規 格

Model Number 型式號碼	Maximum Pressure 最大壓力 bar	Maximum Flow 最大流量 lpm	Weight 重量 Kg
VSV12-23	350 (5076psi)	150 (39.6gpm)	1.21 (2.67 lbs)
Fluid Type 流體型式		ISO VG 32, 46, 68	
Viscosity 黏性 cSt		10~400 (59~1854 SSU)	
Operating Temperature 操作溫度 °C		-15~70 (-5~158°F)	
Contamination Level 污染標準		ISO4406. 21/19/16 NAS1638,10	

Note: The maximum allowable pressure for the standard aluminum-alloy valves is 250 bar; we also supply the nodular ductile-iron and steel valves; contact our factory for details
註:標準閥牌鋁合金最大壓力250bar, 另提供球墨鑄鐵及鋼製閥牌,請聯繫工廠。

◆ HOW TO ORDER 編號說明

1	2	3	4	5	6	7	8						
VSV	12	—	23	—	A2	—	X	—	Y	—	*	—	*

5 WIRING TYPE 接線型式

Non: WIRING BOX TYPE (DIN) X: DOUBLE LEAD
無: 接線盒式 (DIN) 雙接線方式



※ For more technical information of wiring type please refer to the appendixes-D or contact with us.
接線型式的詳細技術資料請查附錄-D或與我們聯繫。

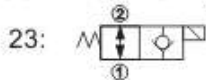
1 VALVE SERIES 系列名稱

VSV=Cartridge Type Solenoid Operated
Check Valves 插入式電磁止逆閥

2 SUBPLATE MOUNTING SIZE 稱呼口徑

Size: 12 Cavity 孔口: CS12-2N

3 CONTROL PORT(S) 動作形式



4 TYPE OF COIL 線圈類型

Non: Without Coil 無記號: 無線圈

A1: RAC110V 60/50HZ D1: DC12V
A2: RAC220V 60/50HZ D2: DC24V

6 ADJUSTMENT OPTION 調整選擇

Non	
Non: Standard 無記號: 標準型	
Y	
Y: Push Style Manual Override 推壓型 - 手動操作復位	

7 THREADED TYPE

螺紋規格
1P: PT 3G: PF(G)
2N: NPT 4A: SAE
5B: BSP

8 PORTS DIMENSIONS 接口尺寸

A: 1/2 B: 3/4

◆ DIMENSIONS 外型尺寸圖

外型尺寸圖

