

# SOLENOID OPERATED CARTRIDGE VALVES

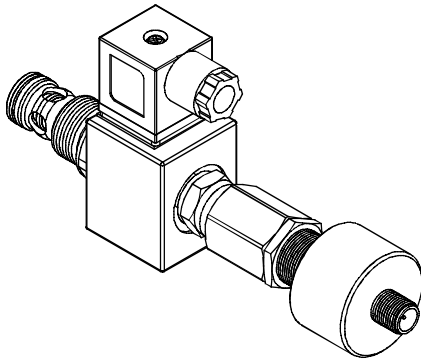
插入式電磁閥

## VSV SERIES CARTRIDGE TYPE SOLENOID OPERATED CHECK VALVES

VSV 系列插入式電磁止逆閥

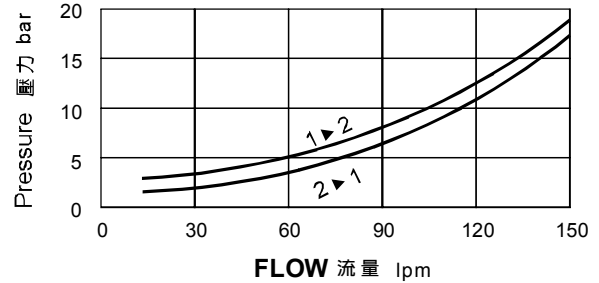
### ◆ MODEL 型 式

VSV12-28-GIV



### ◆ PERFORMANCE 特性曲線

#### Pressure Drop 壓力降



### ◆ SPECIFICATIONS 規 格

| Model Number 型式號碼             | Maximum Pressure 最大壓力 bar | Maximum Flow 最大流量 lpm        | Weight 重量 Kg    |
|-------------------------------|---------------------------|------------------------------|-----------------|
| VSV12-28-GIV                  | 350 (5076 psi)            | 150 (39.63 gpm)              | 0.85 (1.87 lbs) |
| Fluid Type 流體型式               |                           | ISO VG 32, 46, 68            |                 |
| Viscosity 黏性 cSt              |                           | 10~400 (59~1854 SSU)         |                 |
| Operating Temperature 操作溫度 °C |                           | -30~100 (-22~212°F)          |                 |
| Contamination Level 污染標準      |                           | ISO4406. 21/19/16 NAS1638,10 |                 |

### ◆ HOW TO ORDER 編號說明

| 1   | 2  | 3 | 4  | 5 | 6  |   |   |   |     |
|-----|----|---|----|---|----|---|---|---|-----|
| VSV | 12 | — | 28 | — | A2 | — | * | — | GIV |

#### 1 VALVE SERIES 系列名稱

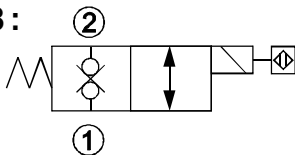
VSV=Cartridge Type Solenoid Operated Check Valves 插入式電磁止逆閥

#### 2 SUBPLATE MOUNTING SIZE 稱呼口徑

Size:12  
Cavity 孔口: CS12-2N  
See Page Appendixes-A\_001  
見附錄A\_001 頁面

#### 3 CONTROL PORT(S) 動作形式

28:



#### 4 TYPE OF COIL 線圈類型

Non: Without Coil 無記號:無線圈  
A1 : RAC110V 60/50HZ D1 : DC12V  
A2 : RAC220V 60/50HZ D2 : DC24V

#### 5 WIRING TYPE 接線型式

Non: WIRING BOX TYPE (DIN) X: DOUBLE LEAD 雙接線方式  
無:接線盒式 (DIN)

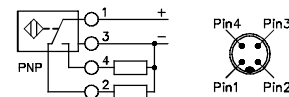


※ For more technical information of wiring typt please refer to the appendixes-D or contact with us .  
接線型式的詳細技術資料請查附錄-D或與我們聯繫.

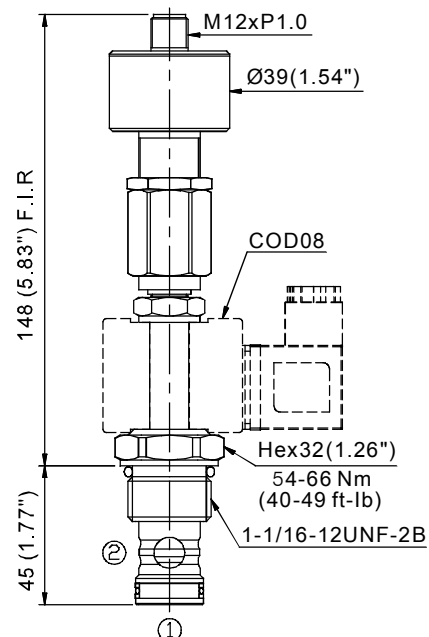
#### 6 DESIGN NO 設計編號

GIV :Position Switch Included

附位置感應器



### ◆ DIMENSIONS 外型尺寸圖



A  
120

VSV