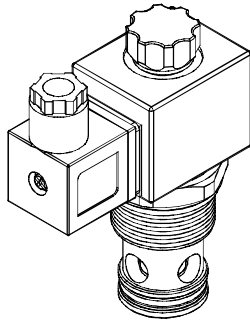
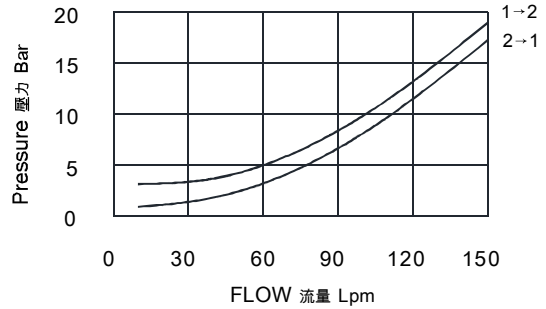


◆ **MODEL 型 式**

VSV16-29



◆ **PERFORMANCE 特性曲線**



◆ **SPECIFICATIONS 規 格**

Model Number 型式號碼	Maximum Pressure 最大壓力 bar	Maximum Flow 最大流量 lpm	Weight 重量 Kg
VSV16-29	350 (5076 psi)	150 (39.63 gpm)	0.71 (1.57 lbs)
<b>Fluid Type 流體型式</b>		ISO VG 32, 46, 68	
<b>Viscosity 黏性 cSt</b>		10~400 (59~1854 SSU)	
<b>Operating Temperature 操作溫度 °C</b>		-30~100 (-22~212 °F)	
<b>Contamination Level 污染標準</b>		ISO4406. 21/19/16 NAS1638,10	

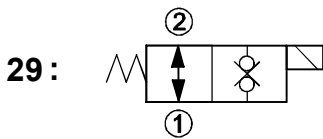
◆ **HOW TO ORDER 編號說明**

<b>1</b>	<b>2</b>	<b>3</b>	<b>4</b>	<b>5</b>	<b>6</b>
VSV	16	—	29	—	A2 — X — Y

**1 VALVE SERIES 系列名稱**  
 VSV=Cartridge Type Solenoid Operated  
 Check Valves 插入式電磁止逆閥

**2 SUBPLATE MOUNTING SIZE 稱呼口徑**  
 Size:16  
 Cavity 孔口 : CS16-2N  
 See Page Appendixes-A\_002  
 見附錄A\_002 頁面

**3 CONTROL PORT(S) 動作形式**



**4 TYPE OF COIL 線圈類型**  
 Non: Without Coil 無記號:無線圈  
 A1 : RAC110V 60/50HZ      D1 : DC12V  
 A2 : RAC220V 60/50HZ      D2 : DC24V

**5 WIRING TYPE 接線型式**  
 Non: WIRING BOX TYPE (DIN)      X: DOUBLE LEAD  
 無:接線盒式 (DIN)                  雙接線方式



※ For more technical information of wiring typt please refer to the appendixes-D or contact with us .  
 接線型式的詳細技術資料請查附錄-D或與我們聯繫.

**6 ADJUSTMENT OPTION 調整選擇**

<b>Non</b> Non:Standard 無記號:標準型	
<b>Y</b> Y:Push Style Manual Override 推壓型- 手動操作復位	

◆ **DIMENSIONS 外型尺寸圖**

