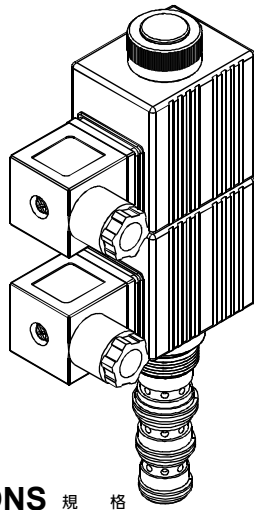
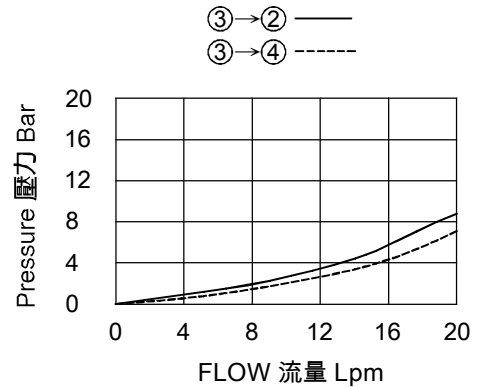


◆ **MODEL 型 式**
VWE10-C4



◆ **PERFORMANCE 特性曲線**



◆ **SPECIFICATIONS 規 格**

Model Number 型式號碼	Maximum Pressure 最大壓力 bar	Maximum Flow 最大流量 lpm	Weight 重量 Kg
VWE10-C4	210 (3046 psi)	20 (5.28 gpm)	1.03 (2.27 lbs)
Fluid Type 流體型式		ISO VG 32, 46, 68	
Viscosity 黏性 cSt		10~400 (59~1854 SSU)	
Operating Temperature 操作溫度 °C		-30~100 (-22~212°F)	
Contamination Level 污染標準		ISO4406. 21/19/16 NAS1638,10	

◆ **HOW TO ORDER 編號說明**

1	2	3	4	5
VWE	10	— C4	— A1	— *

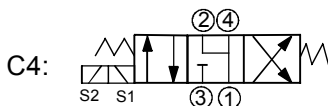
1 VALVE SERIES 系列名稱

VWE= Spool 4-Way 3-Position
閥蕊 四方向 三方位

2 SUBPLATE MOUNTING SIZE 稱呼口徑

Size:10
Cavity 孔口: CS10-4N
See Page Appendixes-A_004
見附錄A_004 頁面

3 CONTROL PORT(S) 動作形式



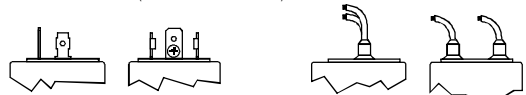
4 TYPE OF COIL 線圈類型

Non: Without Coil 無記號:無線圈
A1 : RAC110V 60/50HZ D1 : DC12V
A2 : RAC220V 60/50HZ D2 : DC24V

5 WIRING TYPE 接線型式

Non: WIRING BOX TYPE
(DIN 43650-A / ISO4400)
無:接線盒式 (DIN 43650-A/ISO4400)

X: DOUBLE LEAD
雙接線方式



※ For more technical information of wiring typt please refer to the appendixes-D or contact with us .
接線型式的詳細技術資料請查附錄-D或與我們聯繫。

◆ **DIMENSIONS 外型尺寸圖**

