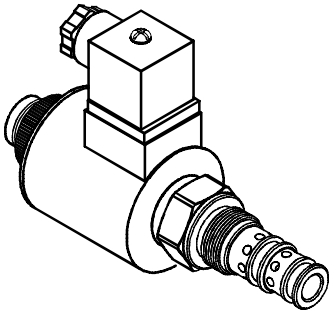
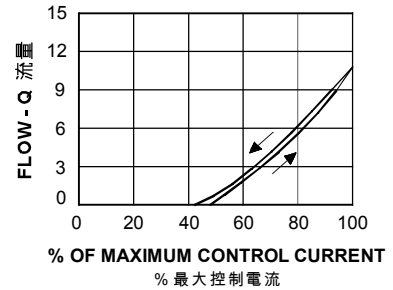
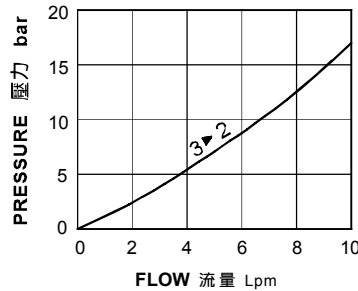


◆ MODEL 型 式 EVEP-08



◆ PERFORMANCE 特性曲線



◆ SPECIFICATIONS 規 格

Model Number 型式號碼	Maximum Pressure 最大壓力 bar	Maximum Flow 最大流量 lpm	Rated Current 額定電流 mA	Voltage 電壓 VDC	Weight 重量 Kg
EVEP-08	210 (3046 psi)	10 (2.64 gpm)	1000±10%	12	0.45(0.99lbs)
			500±10%	24	
Fluid Type 流體型式			ISO VG 32 , 46 , 68		
Viscosity 黏性 cSt			10~400 (59~1854 SSU)		
Operating Temperature 操作溫度 °C			-30~100 (-22~212°F)		
Contamination Level 污染標準			ISO4406. 21/19/16 NAS1638,10		

◆ HOW TO ORDER 編號說明

1	2	3	4	5
EVEP	08	*	D2	*

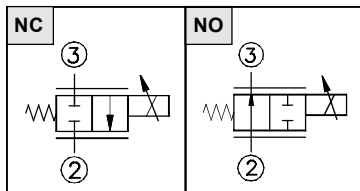
1 VALVE SERIES 系列名稱

EVEP = Proportional Directional Valves
(Non Compensated Flow Regulators)
比例方向閥(非補償流量調節器)

2 SUBPLATE MOUNTING SIZE 稱呼口徑

Size: 08
Cavity 孔口: CS08-3N
See Page Appendixes-A_002
見附錄A_002 頁面

3 CONTROL PORT(S) 動作形式



4 TYPE OF COIL 線圈類型

D1 : DC12V
D2 : DC24V

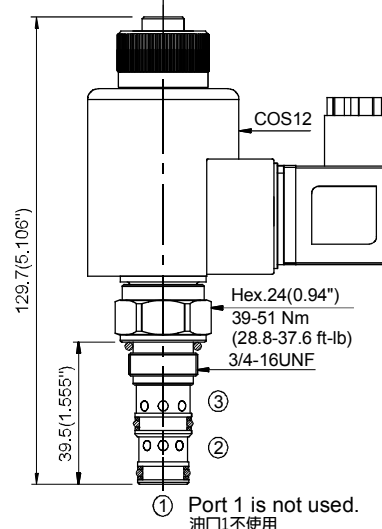
※ For more technical information of coil please refer to the appendixes-D or contact with us .

※ 線圈詳細技術資料請查附錄-D或與我們聯繫。

5 ADJUSTMENT OPTION 調整選擇

Non	Non-Standard 無記號：標準型	
S	S: Twist Style Manual Override 旋緊型 - 手動操作復位	

◆ DIMENSIONS 外型尺寸圖



Recommend to connect port 1 to the tank.
Allowance pressure of port 1 max 150bar (2175 psi)
建議把油口1連接到油箱。
油口1的允許壓力最大150bar (2175 psi) .