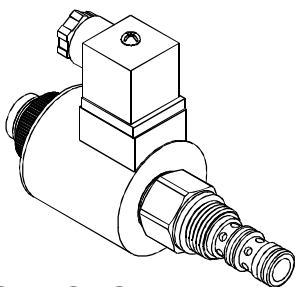
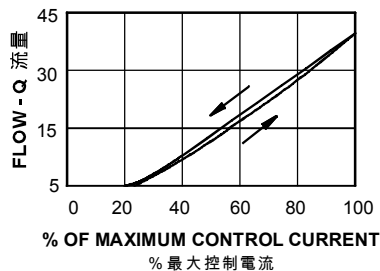
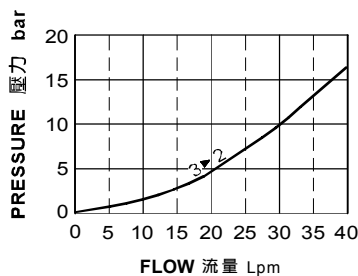


◆ **MODEL** 型式
EVEP-10



◆ **PERFORMANCE** 特性曲線



◆ **SPECIFICATIONS** 規格

Model Number 型式號碼	Maximum Pressure 最大壓力 bar	Maximum Flow 最大流量 lpm	Rated Current 額定電流 mA	Voltage 電壓 VDC	Weight 重量 Kg
EVEP-10-K30	210 (3046 psi)	40 (10.56 gpm)	2400±10%	12	0.7(1.54lbs)
			1200±10%	24	
EVEP-10-K50	210 (3046 psi)	40 (10.56 gpm)	1300±10%	12	
EVEP-10-K60			650±10%	24	
Fluid Type 流體型式			ISO VG 32 , 46 , 68		
Viscosity 黏性 cSt			10~400 (59~1854 SSU)		
Operating Temperature 操作溫度 °C			-30~100 (-22~212°F)		
Contamination Level 污染標準			ISO4406. 21/19/16 NAS1638,10		

◆ **HOW TO ORDER** 編號說明



1 VALVE SERIES 系列名稱

EVEP = Proportional Directional Valves
(Non Compensated Flow Regulators)
比例方向閥(非補償流量調節器)

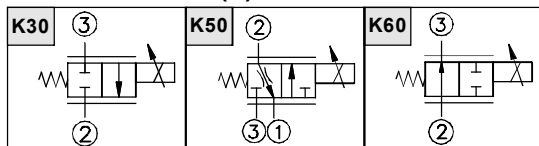
2 SUBPLATE MOUNTING SIZE 稱呼口徑

Size: 10
Cavity 孔口: CS10-3N
See Page Appendixes-A_002
見附錄A_002 頁面

3 REGULATED FLOW RANGE 調節流量範圍

Model 型式	Regulated Flow Rate 調節流量 lpm
20	20 lpm (5.28 gpm)
30	30 lpm (7.93 gpm)
40	40 lpm (10.56 gpm)

4 CONTROL PORT(S) 動作形式



5 TYPE OF COIL 線圈類型

D1 : DC12V
D2 : DC24V

※ For more technical information of coil please refer to the appendixes-D or contact with us .

※ 線圈詳細技術資料請查附錄-D或與我們聯繫。

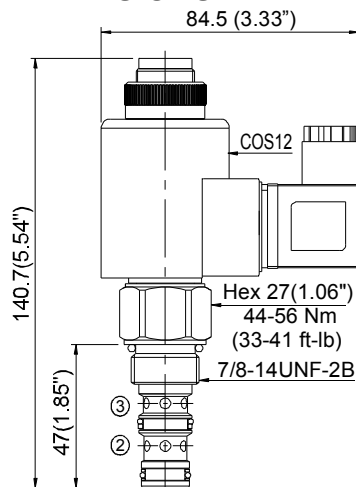
6 ADJUSTMENT OPTION 調整選擇

Non: Standard 無記號：標準型	Non	S: Twist Style Manual Override 旋緊型—手動操作復位	Y: Push Style Manual Override 推壓型—手動操作復位

7 SEALS 密封件

Non : NBR (Standard) 無記號：丁腈橡膠(標準型)
HN : HNBR 氫化丁腈橡膠

◆ **DIMENSIONS** 外型尺寸圖



① K30 & K60 Port 1 is not used.
K30 & K60 油口1不使用

Recommend to connect port 1 to the tank.
Allowance pressure of port 1 max 150bar (2175 psi)
建議把油口1連接到油箱。
油口1的允許壓力最大150bar (2175 psi) .