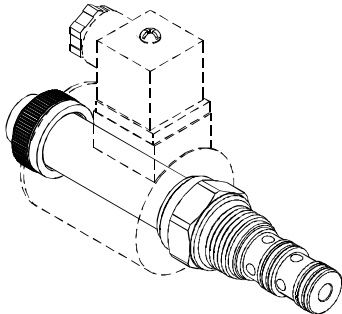


◆ **MODEL 型式**
EVGB-10



◆ **DESCRIPTION 說明**

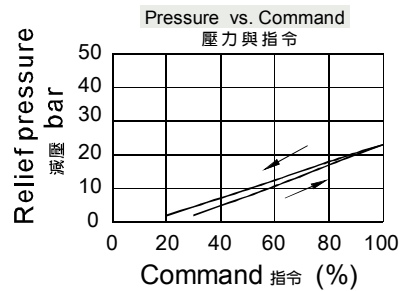
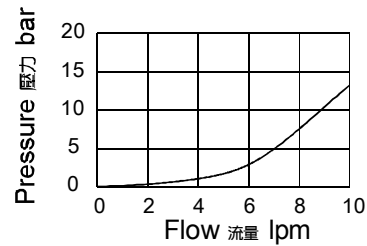
Direct acting, spool-type reducing/relieving valve, which can be infinitely adjusted across a prescribed range using a variable electric input. Pressure output is proportional to DC current input. This valve is intended for use as a pressure control device in demanding applications.

The EVGB-10 allows free flow from 1 to 3 when no current is applied to the coil. When the coil is energized, 2 is connected to 1. Increasing current applied to the coil will increase the control (reduced) pressure proportionally. If pressure at 1 exceeds the setting induced by the coil, pressure from 1 is relieved to 3.

直動滑軸式減壓/溢流閥,利用可變電輸入可實現指定範圍內的連續調節.輸出壓力與DC電流輸入成比例.該閥在設備中可用作壓力控制裝置.

線圈中無電流時,EVGB-10允許油液從1自由流向油口3.線圈通電時,2將連至1.控制(減壓)壓力將隨著線圈中電流的增大而成比例地增大.如果1處的壓力超過線圈的設定壓力,則在油口3溢流.

◆ **PERFORMANCE 特性曲線**



◆ **SPECIFICATIONS 規格**

Model Number 型式號碼	Maximum Pressure 最大壓力 bar	Maximum Flow 最大流量 lpm	Rated Current 額定電流 mA	Voltage 電壓 VDC	Weight 重量 Kg
EVGB-10	210 (3046psi)	10 (2.64 gpm)	2000±10%	12	0.33 (0.73 lbs)
			1000±10%	24	
Fluid Type 流體型式			ISO VG 32 , 46 , 68		
Viscosity 黏性 cSt			10~400 (59~1854 SSU)		
Operating Temperature 操作溫度 °C			-30~100 (-22~212°F)		
Contamination Level 污染標準			ISO4406. 20/18/15 NAS1638. 9		

◆ **HOW TO ORDER 編號說明**

1	2	3
EVGB	10	02

1 VALVE SERIES 系列名稱

EVGB=Proportional Reducing / Relieving Valves
(Direct-Acting) 比例減泄壓閥(直動式)

2 SUBPLATE MOUNTING SIZE 稱呼口徑

Size:10
Cavity 孔口 : CS10-3N
See Appendices-A 見附錄A
For Manifold See Appendices-B 油路板見附錄B

3 ADJUSTMENT PRESSURE 壓力調整範圍

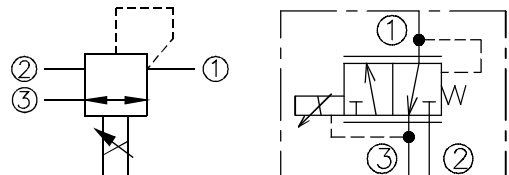
Code 編碼	Adjustment pressure 壓力調整範圍
02	2 ~ 22 (bar)

◆ **TYPE OF COIL** 線圈類型

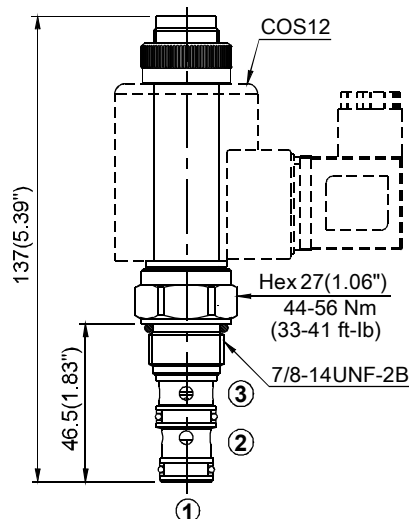
Model number 型式編號 : COS12
See Appendices-D
見附錄 D

- Coils must be ordered separately
線圈必須分開訂購

◆ **CONTROL PORT(S)** 動作形式



◆ **DIMENSIONS** 外型尺寸圖



- Allowed Back Pressure at port 3 (T) : 5 bar (73 psi)max.
允許背壓在孔口3 (T) : 最大5bar(73psi)