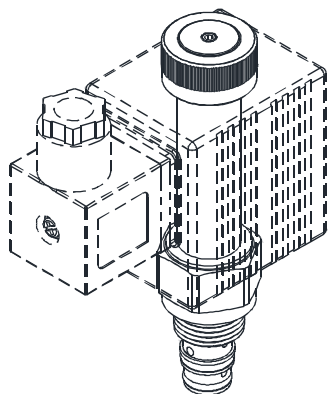


◆ **MODEL 型式**

EVGB-E081-04



◆ **DESCRIPTION 說明**

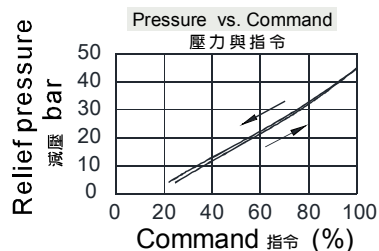
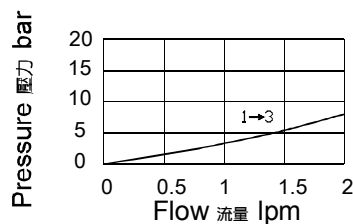
Direct acting, spool-type reducing/relieving valve, which can be infinitely adjusted across a prescribed range using a variable electric input. Pressure output is proportional to DC current input. This valve is intended for use as a pressure control device in demanding applications.

The EVGB-E081 allows free flow from 1 to 3 when no current is applied to the coil. When the coil is energized, 2 is connected to 1. Increasing current applied to the coil will increase the control (reduced) pressure proportionally. If pressure at 1 exceeds the setting induced by the coil, pressure from 1 is relieved to 3.

直動滑軸式減壓/溢流閥,利用可變電輸入可實現指定範圍內的連續調節.輸出壓力與DC電流輸入成比例.該閥在設備中可用作壓力控制裝置.

線圈中無電流時,EVGB-E081允許油液從 1 自由流向油口3.線圈通電時,2 將連至1.控制(減壓)壓力將隨著線圈中電流的增大而成比例地增大.如果 1 處的壓力超過線圈的設定壓力,則在油口 3 溢流.

◆ **PERFORMANCE 特性曲線**



◆ **SPECIFICATIONS 規格**

Model Number 型式號碼	Maximum Inlet Pressure In 2 最大入口壓力在2號口 Bar	Reduced Pressure In 1 減壓在1號口 Bar	Rated Flow 額定流量 lpm	Maximum Current 最大電流 mA	Voltage 電壓 VDC	Weight 重量 Kg
EVGB-E081-04	350 (5076 psi)	4~45 (58~653 psi)	2 (0.53 gpm)	1200±10%	12	0.19 (0.42 lbs)
				600±10%	24	
<b>Fluid Type</b> 流體型式			ISO VG 32, 46, 68			
<b>Viscosity</b> 黏性 cSt			10~400 (59~1854 SSU)			
<b>Operating Temperature</b> 操作溫度 °C			-30~100 (-22~212°F)			
<b>Contamination Level</b> 污染標準			ISO4406. 20/18/15 NAS1638. 9			

◆ **HOW TO ORDER 編號說明**

<b>1</b>	<b>2</b>	<b>3</b>
<b>EVGB</b>	<b>E081</b>	<b>04</b>

**1 VALVE SERIES** 系列名稱

EVGB=Proportional Reducing/ Relieving Valves  
(Direct-Acting) 比例減泄壓閥(直動式)

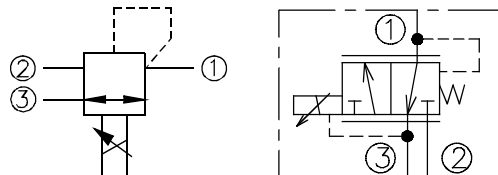
**2 SUBPLATE MOUNTING SIZE** 稱呼口徑

E081 : E-081 Cavity 孔口 : CSE 081-2N  
For Manifold See Appendices-B 油路板見附錄B

**3 REDUCED PRESSURE IN 1** 減壓在1號口

04: 4~45(bar)

◆ **CONTROL PORT(S) 動作形式**

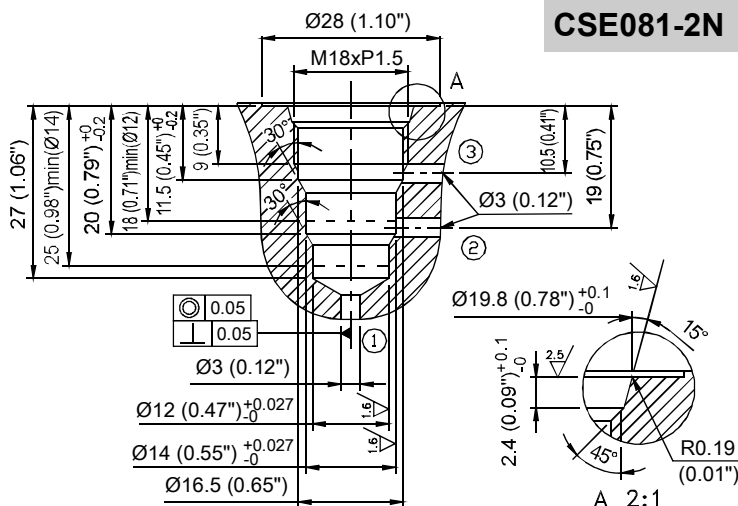
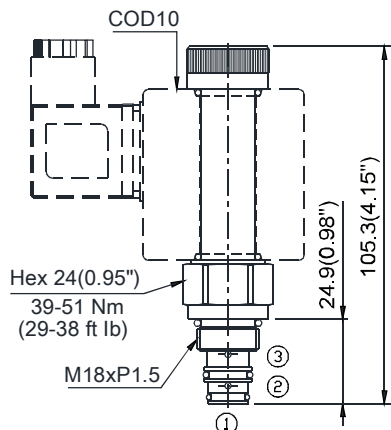


◆ **TYPE OF COIL 線圈類型**

Model number 型式編號 : COD10  
See Appendices-D  
見附錄 D

- Coils must be ordered separately  
線圈必須分開訂購

◆ **DIMENSIONS 外型尺寸圖**



- Allowed Back Pressure at port 3 (T) : 5 bar (73 psi)max.  
允許背壓在孔口3 (T) : 最大5bar(73psi)